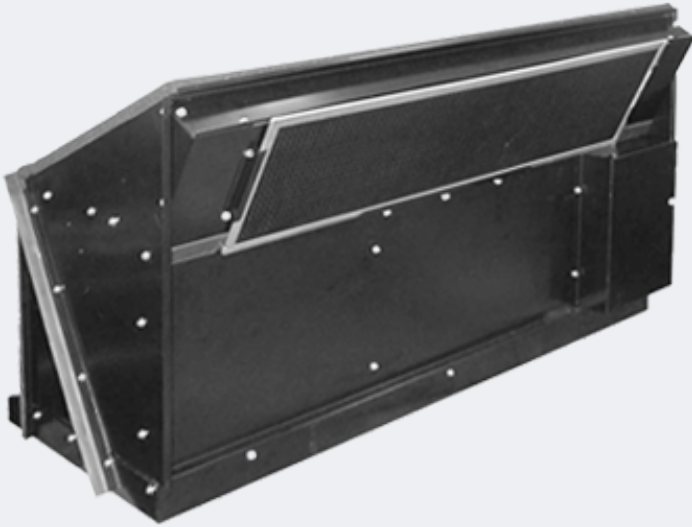


SERIES EK REPLACEMENT CHASSIS

Remington / Singer / McQuay K, IslandAire KF and RetroAire RC 60



ADIRONDACK-AIRE



The Adirondack-Aire EK Series zerOzone chassis provides environment friendly, high efficiency cooling and heating where individual, quiet control is a priority. This application flexible unit is also a direct replacement for Remington/Singer/McQuay K, IslandAire KF and RetroAire RC 60 series chassis.

The chassis is a part of a complete system, which consists of the chassis, blower/heat section, control box, a wall sleeve, room cabinet, and outdoor louver. The chassis contains the compressor, indoor and outdoor heat exchangers, condenser motor and fan, and refrigeration circuit controls.

The EK is dimensionally identical to the original for a fast, easy, and trouble-free installation. Quality components, careful design and testing and the latest in environment friendly EPA compliance mean long unit life, user satisfaction, and lower energy costs.

Consider the extensive list of standard features, which includes: Rust-Block* corrosion protection system, centrifugal condenser fan, evaporator freeze protection, pull handle, permanent electrostatic air filter, and high-pressure over protection. Adirondack-Aire is the replacement solution that the competition can't match. Cold Point Corp. backs the EK with a customer friendly one-year parts and labor warranty and five-year compressor warranty, (see Warranty document for details).

* Rust-Block corrosion protection system consists of: Heavy gauge galvanized steel construction with powder paint finished condenser and evaporator pans; galvanized or aluminum condenser fan, stainless steel compressor and condenser motor studs; Magnaguard and/or stainless steel screws and fasteners.

APPLICATION & BENEFITS



FAST AND EASY REPLACEMENT

The Adirondack-Aire EK series replacement chassis fits the existing Remington/Singer/McQuay wall sleeves and room cabinets and works with the existing blower/heat section and control box without modification. An original style mox electrical connector is included. No adapters or wire nut connections are needed as in other brands of replacements. Because the chassis dimensions and construction details are like the original, replacement work is fast and easy. A chassis pull handle is provided to facilitate easy removal and handling. Using Adirondack-Aire replacements eliminates the need for room and exterior wall renovation and is the solution that gets your property back in service quickly and at the lowest total cost. Choose the optional room cabinet to give the unit a brand new look and improve room aesthetics.

DAMAGE PROTECTION



A premium feature usually found only in expensive commercial systems, the standard high-pressure switch and evaporator freeze protection stop unit operation before damage occurs, should airflow become reduced or obstructed due to dirty coils, obstructed airflow, or motor failure or lock up. A forward-curved centrifugal condenser fan provides proven airflow performance. Condensate re-evaporation and the Rust-Block system assure a stain-free building exterior.



OPTIONS AND ACCESSORIES

- Blower/heat sections
- Electric heat or hydronic heat
- Control box (long or short)
- Control options
- Motorized fresh air
- 115V and 265/277V (availability varies by model size)
- Cabinets
- Wall sleeves
- Louvers

SERIES EK REPLACEMENT CHASSIS

Remington / Singer / McQuay K, IslandAire KF and RetroAire RC 60



ADIRONDACK-AIRE

Performance Ratings*

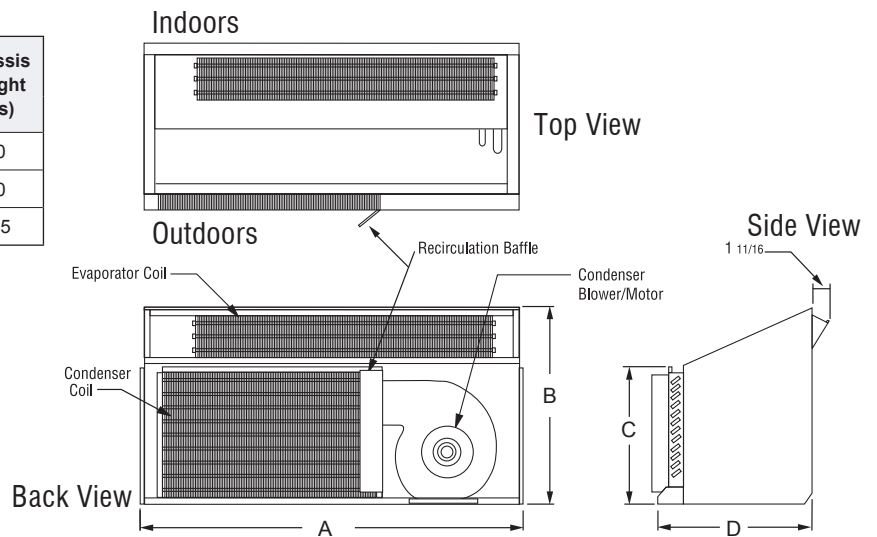
Model	Cool Btuh	Sens Btuh	EER	CFM Hi/Lo*	Cond. Fan Type/ Air Direction	Refrigerant
EK-09	8,900	7,200	9.3	275/350	Centrifugal/ Blow Thru	R-410A
EK-12	11,800	9,200	8.4	325/440		R-410A
EK-14	13,800	9,200	7.9	385/465		R-410A

Continuous engineering improvements may result in performance changes without notice.

* Dry coil airflow with optional Adirondack-Aire blower section

Unit Sizes

Model	A	B	C	D	Chassis Weight (lbs)
	Inches				
EK-09	35 3/4	19 1/4	12 7/8	15 5/16	90
EK-12	35 3/4	19 1/4	12 7/8	15 5/16	90
EK-14	35 3/4	19 1/4	12 7/8	15 5/16	135



Rome, New York 13440

Phone (315) 339-2331 • Fax (315) 339-2358

www.ColdPointCorp.com

©2017 Cold Point Corp. All rights reserved.



CPL059 rev. 08-17