

# AAS Series 0.5 to 5-ton Water Source Heat Pump

## QUICK REFERENCE GUIDE

The AAS Series from Cold Point boasts a compact cabinet, making this heat pump system the perfect solution for commercial retrofit or new construction applications. The AAS Series far exceeds the ASHRAE 90.1 minimum efficiency and utilizes environmentally friendly R-410A refrigerant to reduce operating costs without compromising the environment. AAS Series water source heat pumps are popular in a variety of building applications where quiet operation in a compact footprint is a key requirement.



Vertical Cabinet Configuration - Electrical data Constant Torque EC Motor				
Size (Tons)	Voltage	HP	MCA	MOPD
AASV*006A***A (0.50)	208-230/1/60	1/4	5.3	15
	265/1/60	1/4	4.8	15
AASV*009A***A (0.75)	208-230/1/60	1/4	7.2	15
	265/1/60	1/4	6.3	15
AASV*0012A***A (1.00)	208-230/1/60	1/4	9.2	15
	265/1/60	1/4	8.0	15
AASV*015A***A (1.25)	208-230/1/60	1/4	8.2	15
	265/1/60	1/4	7.5	15
AASV*018A***A (1.50)	208-230/1/60	1/4	11.8	15
	265/1/60	1/4	11.1	15
AASV*024A***A (2.00)	208-230/1/60	1/2	21.5	30
	265/1/60	1/2	14.5	20
	208-230/3/60	1/2	13.5	20
	460/3/60	1/2	7.6	15
AASV*030A***A (2.50)	208-230/1/60	1/2	22.2	30
	265/1/60	1/2	17.2	20
	208-230/3/60	1/2	15.7	20
AASV*036A***A (3.0)	460/3/60	1/2	8.5	15
	208-230/1/60	1/2	22.2	30
	265/1/60	1/2	18.5	30
	208-230/3/60	1/2	15.9	20
AASV*042A***A (3.50)	460/3/60	1/2	10.2	15
	208-230/1/60	3/4	28.7	40
	265/1/60	3/4	23.9	30
	208-230/3/60	3/4	23.2	30
AASV*048A***A (4.00)	460/3/60	3/4	11.4	15
	208-230/1/60	3/4	33.6	50
	265/1/60	3/4	24.3	40
	208-230/3/60	3/4	23.4	30
AASV*060A***A (5.00)	460/3/60	3/4	11.7	15
	208-230/1/60	1	39.5	50
	265/1/60	1	30.9	50
	208-230/3/60	1	26.1	40
	460/3/60	1	15.8	20

Horizontal Cabinet Configuration - Electrical data Constant Torque EC Motor				
Size (Tons)	Voltage	HP	MCA	MOPD
AASH*006A***A (0.50)	208-230/1/60	1/4	5.3	15
	265/1/60	1/4	4.8	15
AASH*009A***A (0.75)	208-230/1/60	1/4	7.2	15
	265/1/60	1/4	6.3	15
AASH*0012A***A (1.00)	208-230/1/60	1/4	9.2	15
	265/1/60	1/4	8.0	15
AASH*015A***A (1.25)	208-230/1/60	1/4	8.2	15
	265/1/60	1/4	7.5	15
AASH*018A***A (1.50)	208-230/1/60	1/4	11.8	15
	265/1/60	1/4	11.1	15
AASH*024A***A (2.00)	208-230/1/60	1/2	21.5	30
	265/1/60	1/2	14.5	20
	208-230/3/60	1/2	13.5	20
	460/3/60	1/2	7.6	15
AASH*030A***A (2.50)	208-230/1/60	1/2	22.2	30
	265/1/60	1/2	17.2	20
	208-230/3/60	1/2	15.7	20
AASH*036A***A (3.0)	460/3/60	1/2	8.5	15
	208-230/1/60	1/2	22.2	30
	265/1/60	1/2	18.5	30
	208-230/3/60	1/2	15.9	20
AASH*042A***A (3.50)	460/3/60	1/2	10.2	15
	208-230/1/60	3/4	28.7	40
	265/1/60	3/4	23.9	30
	208-230/3/60	3/4	23.2	30
AASH*048A***A (4.00)	460/3/60	3/4	11.4	15
	208-230/1/60	3/4	33.6	50
	265/1/60	3/4	24.3	40
	208-230/3/60	3/4	23.4	30
AASH*060A***A (5.00)	460/3/60	3/4	11.7	15
	208-230/1/60	3/4	39.2	50
	265/1/60	3/4	28.8	40
	208-230/3/60	3/4	25.8	40
	460/3/60	3/4	13.7	20

Factory and Field Installed Options		
Option	Factory	Field
Constant torque Electronically Commutated (EC) fan motor	•	
Hot gas reheat	•	
Waterside economizer	•	
Hydronic heating	•	
Extended water range package	•	
2 or 3-way motorized water valves	•	•
Water flow regulators & strainers	•	•
Ball type shut-off valves		•
Internal circulating pump	•	
Copper or cupronickel heat exchanger	•	
Tin-Electro-Plated Copper Tubing /w Aluminum Fin coils	•	
Epoxy coated air coils	•	
Sound attenuation package	•	
Fused or unfused electrical disconnect	•	
DDC control with native BACnet® protocol	•	
Foil-faced or closed cell insulation	•	
MERV 8, MERV 11, or MERV 13 filters	•	
Digital or WiFi enabled thermostats		•
Fire rated stainless steel hoses		•
Remote sensors		•
Electric duct heater		•

Unit features
High efficiency compact cabinet
Stainless steel drain pan
Reconfigurable discharge air outlet location
Bottom service access (horizontal units only)
Removable control box
LED sight glass
Condensate overflow sensor
Solid-state unit control with nine safeties

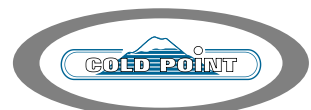
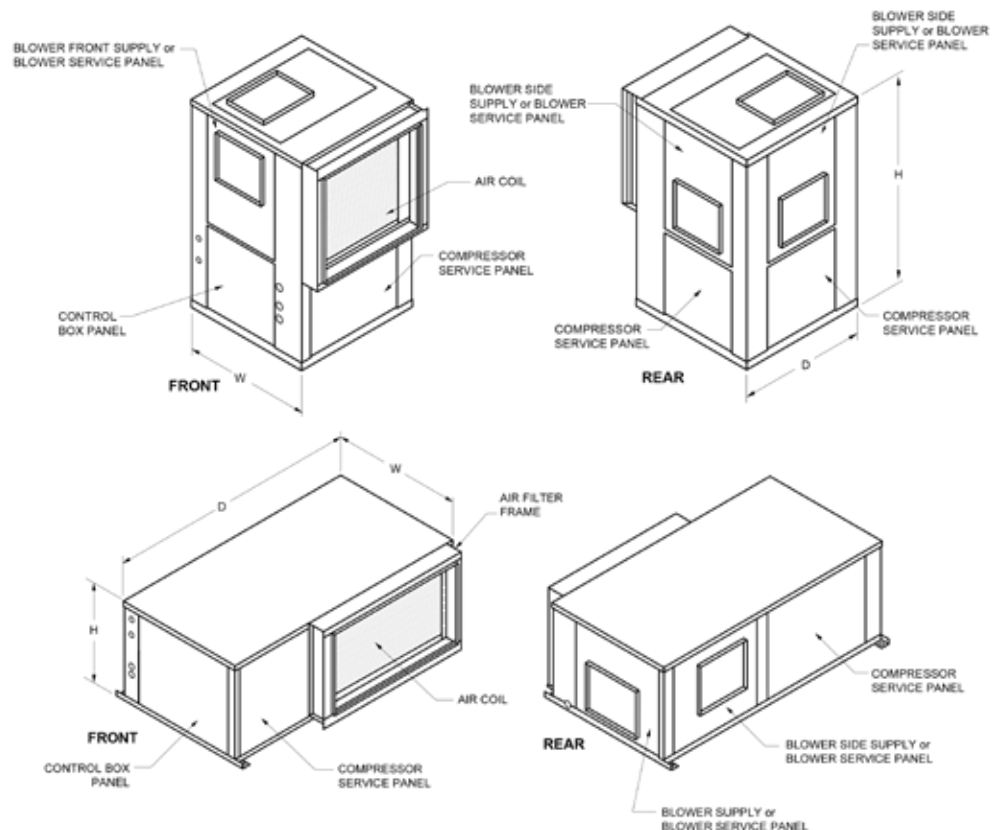


# AAS Series 0.5 to 5-ton Performance Ratings - EC Motor

Model	CFM	GPM	Water Loop Heat Pump				Ground Loop Heat Pump			
			Cooling 86°F		Heating 68°F		Cooling 77°F		Heating 32°F	
			Capacity Btuh	EER Btuh / W	Capacity Btuh	COP	Capacity Btuh	EER Btuh / W	Capacity Btuh	COP
AAS**006A	200	2	6,000	17.0	7,500	5.6	6,300	19.0	4,600	4.0
AAS**009A	300	2.5	9,000	14.0	11,500	4.4	9,300	15.5	7,000	3.4
AAS**012A	400	3	12,500	13.5	15,000	4.5	13,000	14.5	10,000	3.4
AAS**015A	500	3.8	15,000	17.0	18,000	5.6	15,000	19.0	12,000	4.0
AAS**018A	600	4.5	18,000	17.0	21,600	5.6	18,500	19.0	13,500	4.0
AAS**024A	800	6.0	24,000	16.4	28,000	5.2	25,000	18.5	17,000	3.7
AAS**030A	1000	7.5	30,000	16.0	34,000	5.0	30,000	17.5	23,000	3.6
AAS**036A	1200	9.0	36,000	17.0	43,000	5.0	36,000	19.0	28,000	3.6
AAS**042A	1400	10.5	42,000	15.0	49,000	4.6	43,000	17.0	33,000	3.5
AAS**048A	1600	12.0	48,000	15.0	56,000	4.6	49,000	17.0	35,000	3.5
AAS**060A	2000	15.0	58,000	15.0	72,000	4.6	59,000	17.0	49,000	3.5

Model	Overall Cabinet			Weight
	W	D	H	
AASV*006	19.00	19.00	24.00	125
AASV*009	19.00	19.00	24.00	128
AASV*012	19.00	19.00	24.00	130
AASV*015	22.00	22.00	36.00	170
AASV*018	22.00	22.00	36.00	180
AASV*024	22.00	22.00	40.00	215
AASV*030	25.00	26.00	40.00	240
AASV*036	25.00	26.00	45.00	270
AASV*042	25.00	26.00	45.00	290
AASV*048	25.00	32.00	45.00	315
AASV*060	25.00	32.00	45.00	335

Model	Overall Cabinet			Weight
	W	D	H	
AASH*006	20.00	11.50	34.00	125
AASH*009	20.00	11.50	34.00	128
AASH*012	20.00	11.50	34.00	130
AASH*015	22.00	17.00	43.00	180
AASH*018	22.00	17.00	43.00	190
AASH*024	22.00	17.00	45.00	220
AASH*030	22.00	17.00	45.00	225
AASH*036	22.00	19.00	55.00	270
AASH*042	22.00	22.00	55.00	310
AASH*048	25.00	22.00	55.00	325
AASH*060	25.00	22.00	55.00	340



7500 Cold Point Dr • Rome, New York 13440  
 Phone (315) 339-2331 • Fax (315) 339-2358  
[www.ColdPointCorp.com](http://www.ColdPointCorp.com)

