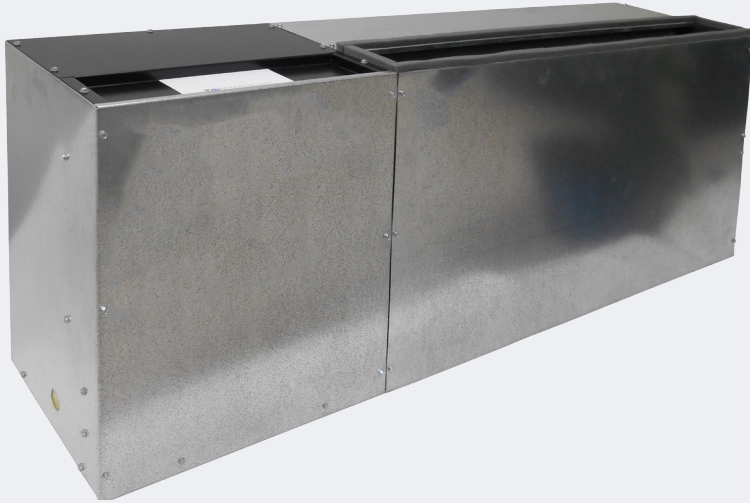


SERIES 800 REPLACEMENT CHASSIS

ClimateMaster / Friedrich 800 Series



ADIRONDACK-AIRE



Adirondack-Aire 800 series zerOzone replacement console chassis units provide environment friendly, high efficiency cooling and heating where individual, quiet control is a priority. This application flexible unit is also a direct replacement for ClimateMaster/Friedrich 800 series console water source heat pump units. The 800 console units are offered as chassis only to work with the existing or custom room cabinets, or with a new cabinet for a complete installation.

The chassis contains the compressor, air-side heat exchanger, water side heat exchanger, evaporator fan and motor, control components and safety components. The optional room cabinet is powder painted furniture-grade steel construction with extruded aluminum grille and control door.

The chassis is dimensionally identical to the original 800 and available with LH or RH piping and wiring for a fast, easy, and trouble-free installation. Quality components, careful design and testing, and the latest in environment friendly technology advances means long unit life, user satisfaction, and lower energy costs.

Consider the extensive list of standard features which includes: powder painted drain pan, refrigerant circuit filter-drier, electrostatic air filter (cabinet mounted), evaporator freeze protection, water coil freezestat, high-pressure over protection, and electronic control board. These features set Adirondack-Aire apart as the choice that the competition can't match. Cold Point Corp. backs the 800 with a customer friendly one-year parts and labor warranty and five-year compressor warranty, (see Warranty document for details).

APPLICATION & BENEFITS



FAST AND EASY REPLACEMENT

The Adirondack-Aire 800 series zerOzone console water source heat pump is the unmatched choice for new construction, renovation, or direct replacement projects. It includes the added benefit of being a direct replacement chassis that fits existing ClimateMaster/Friedrich room cabinets without modification. For new installations, this thoughtfully designed unit offers unmatched ease of installation and service, quiet operation, and long, trouble-free operation. As a replacement unit, the chassis construction physically matches the original with water, drain and electrical size and locations that line right up to the existing connections. Adirondack-Aire eliminates the need for room renovation, redecorating, or piping & wiring changes and is the solution that gets your property back in service quickly and at the lowest total cost. Choose the optional room cabinet for new installations or to give replacement installations a new look and improve room aesthetics.



DAMAGE PROTECTION

The standard high-pressure switch, evaporator coil freeze protection, and electronic control board stop unit operation before damage occurs, should airflow become reduced or obstructed due to dirty filters, obstructed airflow, or motor failure. A freezestat protects the water coil from freeze damage due to water temperature or flow problems. The water coil utilizes a high efficiency convoluted tube design that minimizes water-side fouling.



OPTIONS AND ACCESSORIES

- Room cabinet (LH and RH available)
- Control options
- 115V and 265/ 277V (Availability varies by model size)
- Flow control valve
- Valves and unions
- Extended operating range
- Electric heat (boilerless)
- Hose kits
- Customer-specified custom features

SERIES 800 REPLACEMENT CHASSIS

ClimateMaster / Friedrich 800 Series



ADIRONDACK AIRE

Performance Ratings

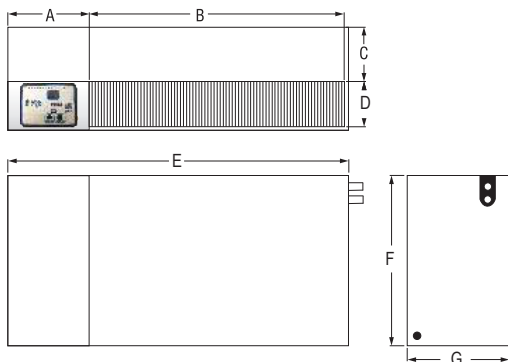
Model	Cool Btuh	Sens Btuh	EER	Heat Btuh	COP	CFM Hi/Lo	GPM	Coil PD	Refrigerant
800-08	Consult Factory								
800-10	10,600	9,100	13.0	11,600	4.5	420/350	2.5	1.8'	R-410A
800-12	12,500	9,600	13.4	14,000	4.4	420/350	3.0	2.5'	R-410A
800-15	Consult Factory								
800-19	Consult Factory								

Continuous engineering improvements may result in performance changes without notice.

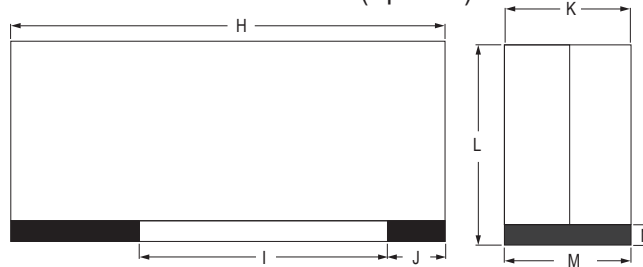
Unit Sizes

Model	A	B	C	D	E	F	G	H	I	J	K	L	M	N	Chassis Weight (lbs)
	Inches														
800-08	14 5/8	31 1/4	7 1/4	4	45 7/8	18 5/8	11 9/16	55	32 3/8	4 1/2	12	24	11 3/8	4	112
800-10	14 5/8	31 1/4	7 1/4	4	45 7/8	18 5/8	11 9/16	55	32 3/8	4 1/2	12	24	11 3/8	4	112
800-12	14 5/8	31 1/4	7 1/4	4	45 7/8	18 5/8	11 9/16	55	32 3/8	4 1/2	12	24	11 3/8	4	130
800-15	Consult Factory														137
800-19	Consult Factory														141

Chassis



Room Cabinet with Sub-Base (Optional)



Rome, New York 13440

Phone (315) 339-2331 • Fax (315) 339-2358

www.ColdPointCorp.com

©2017 Cold Point Corp. All rights reserved.



CPL046 rev. 08-17