

# SERIES HW REPLACEMENT CHASSIS

American Air Filter / Enercon HW Series



ADIRONDACK-AIRE



The Adirondack-Aire HW Series zerOzone chassis is a direct replacement for American Air Filter/ Enercon HW series ducted horizontal water source heat pump units. The HW is a complete unit that contains the compressor, blower, air side heat exchanger, water side heat exchanger, safety components, and control components.

Low voltage wiring is compatible with the original wall thermostat. Duct connections are identical and line right up with the existing ductwork. A full range of unit sizes are available and each are dimensionally identical to the original for a fast, easy, and trouble-free installation.

Proven technology, quality components, careful design and testing and the latest in reliability and efficiency advances mean long unit life, user satisfaction, and lower energy costs. Consider the extensive list of standard features which includes: powder painted drain pan, refrigerant circuit access ports, high efficiency PSC blower motor and dynamically balanced DWDI blower wheel, evaporator freeze protection, water coil freezestat, high-pressure over protection, and lockout circuit.

Adirondack-Aire is the replacement solution for upgrading old, worn out, inefficient original chassis. Heavy gauge mounting brackets and isolation grommets are provided. Cold Point Corp. backs the HW with a customer friendly one-year parts and labor warranty and five-year compressor warranty, (see Warranty document for details).

## APPLICATION & BENEFITS



### FAST AND EASY REPLACEMENT

The Adirondack-Aire HW series zerOzone replacement chassis fit the existing space and ductwork without modifications.

Because the chassis dimensions and construction details are like the original, replacement work is fast and easy. The unit installs without the need for water loop shut down or draining. Water, drain, hanger bracket, ductwork, and electrical connections line right up to the original installation. Using Adirondack-Aire replacements eliminates the need for room renovation, redecorating, ductwork and piping changes. The HW is the solution that gets your property back in service quickly and at the lowest total cost.



### DAMAGE PROTECTION

The standard high-pressure switch and evaporator coil freeze protection stop unit operation before damage occurs, should airflow become reduced or obstructed due to dirty coils, obstructed airflow, motor failure or lock up. A freezestat protects the water coil from freeze damage due to water temperature or flow problems. The water coil is designed for low water-side pressure drop, eliminating potential pump sizing and water flow problems.

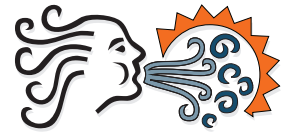


### OPTIONS AND ACCESSORIES

- 115V, 265/277V 1 ph, 208/230V 3ph, 460V 3ph (Availability varies by model size)
- Flow control valve
- Hose kits
- Unit-mounted filter

# SERIES HW REPLACEMENT CHASSIS

American Air Filter / Enercon HW Series



ADIRONDACK AIR

## Performance Ratings\*

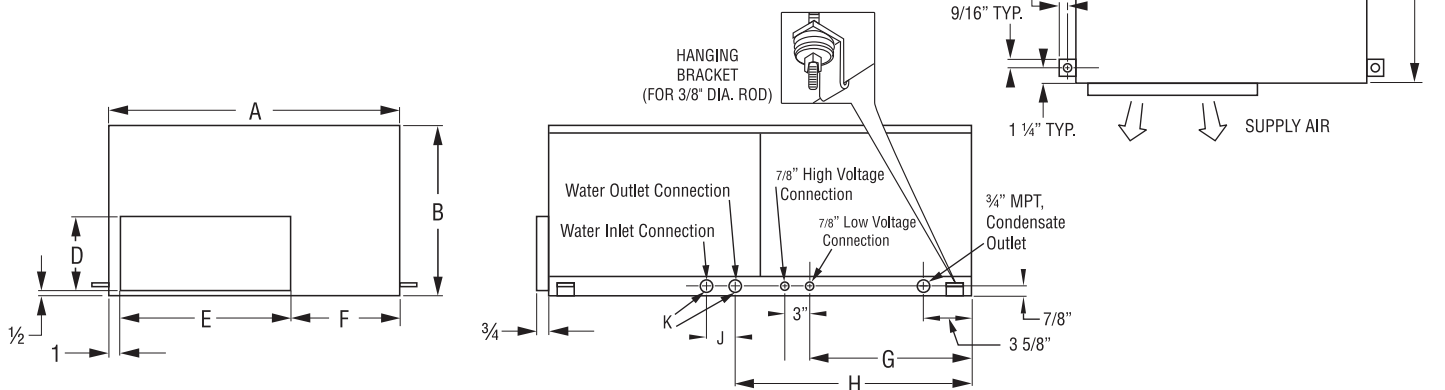
Model	Cooling			Heating		Water Coil		CFM		Refrigerant
	Btuh	Sens Btuh	EER	Heat Btuh	COP	GPM	Coil PD (Ft)	Rated	ESP.	
HW-09	9,900	8,200	13.7	11,500	4.5	2.5	1.8	420	0.10"	R-410A
HW-12	11,000	8,200	12.1	13,800	4.2	3.0	2.5	420	1.15"	R-410A
HW-20	18,400	13,400	13.4	23,500	4.4	5.0	4.0	665	0.20"	R-410A
HW-26	24,300	18,900	13.9	27,500	4.2	6.5	7.4	815	0.20"	R-410A
HW-33	31,900	21,800	12.8	40,000	4.3	8.3	4.0	1,280	0.30"	R-410A
HW-40	40,000	29,000	13.7	49,000	4.5	10.0	5.6	1,360	0.30"	R-410A
HW-51	51,000	41,000	14.5	60,000	4.5	12.5	7.2	1,600	0.40"	R-410A
HW-55	53,000	44,000	13.7	62,000	4.5	13.8	4.5	1,600	0.40"	R-410A

Continuous engineering improvements may result in performance changes without notice.

\*115V, 208/230V 3ph, 265/277V, 460V 3ph (Availability varies by model size)

## Unit Sizes

Model	A	B	C	D	E	F	G	H	J	K	Shipping Weight (lbs)
	Inches										
HW-09	20	12	30	5	11 1/2	7 1/2	8 3/8	17 1/4	2 3/8	1/2 FPT	120
HW-12	20	12	30	5	11 1/2	7 1/2	8 3/8	17 1/4	2 3/8	1/2 FPT	125
HW-20	25	16	35	6 1/2	14	10	13 5/8	21 3/8	2 3/8	1/2 FPT	175
HW-26	25	16	35	6 1/2	14	10	13 5/8	21 3/8	2 3/8	1/2 FPT	180
HW-33	30	18	40	8	19	10	16 1/8	24	2 5/8	3/4 FPT	245
HW-40	30	18	40	8	19	10	16 1/8	24	2 5/8	3/4 FPT	256
HW-51	36	20	44	12	21	14	18 7/8	26 3/4	2 5/8	3/4 FPT	310
HW-55	36	20	44	12	21	14	18 7/8	26 3/4	2 5/8	3/4 FPT	335



Rome, New York 13440

Phone (315) 339-2331 • Fax (315) 339-2358

[www.ColdPointCorp.com](http://www.ColdPointCorp.com)

©2017 Cold Point Corp. All rights reserved.



CPL045 rev. 08-17