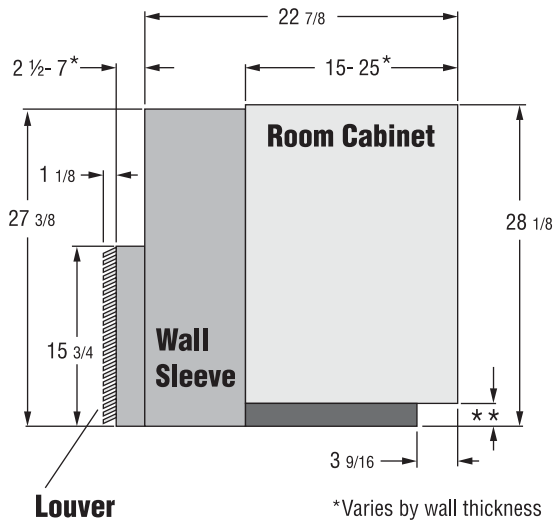
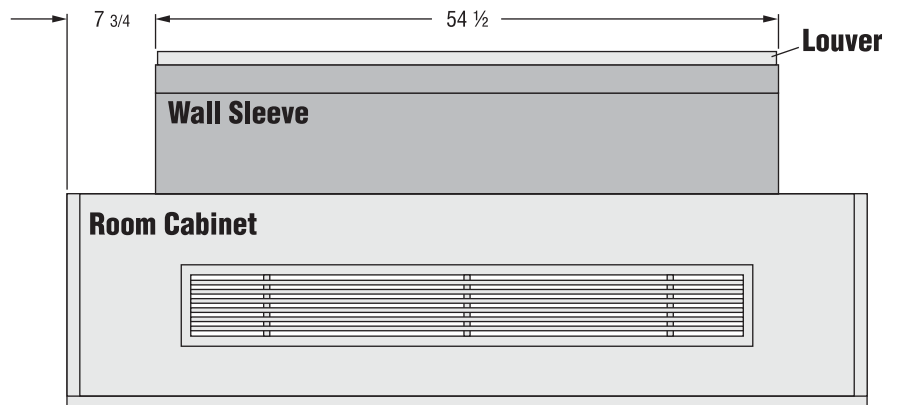


CEC Dimensions and Specifications

Note: Due to Cold Point Corporation's ongoing quality & product development programs, design and specifications may change. Always consult factory to verify the information provided here.

DIMENSIONAL DETAIL 'CEC' PTAC

CEC DEMENSIONALS



*Varies by wall thickness

**3" min. - 5 1/2" max.

