

SERIES CHS REPLACEMENT CHASSIS

Omega HRP Series



ADIRONDACK-AIRE



The Adirondack-Aire CHS series zerOzone chassis provides environment friendly, high efficiency cooling and heating where individual, quiet control is a priority. This application flexible unit is also a direct replacement* for Omega HRP series vertical stacked water source cooling/ heat pump chassis. Original HRP units were heat pumps. The chassis is a part of a complete system, which consists of the chassis, blower section, control box, and furred-in room cabinet with risers. The chassis contains the compressor, air heat exchanger, water heat exchanger, and refrigeration system control and safety components.

The CHS series has three chassis sizes, small (models 300, 10k), mid (model 400, 12k), and large (model 600, 20k; model 800, 24k). All chassis sizes are dimensionally identical to the original for a fast, easy, and trouble-free installation. Quality components, careful design and testing and the latest in environment friendly technology mean long unit life, user satisfaction, and lower energy costs.

Consider the extensive list of standard features which includes: powder painted drain pan, refrigerant circuit access ports, evaporator freeze protection, water coil freeze stat, high-pressure over protection, and lock out circuit. Adirondack-Aire is the replacement solution the competition can't match. Cold Point Corp. backs the CHS with a customer friendly one-year parts and labor warranty and five-year compressor warranty, (see Warranty document for details).

* Various wiring configurations were produced. Details required before placing orders.

APPLICATION & BENEFITS



FAST AND EASY REPLACEMENT

The Adirondack-Aire CHS series zerOzone replacement chassis fits the existing Omega room cabinets and works with the existing blower section and control box without modification*. Because the chassis dimensions and construction details are like the original, replacement work is fast and easy. The chassis installs without the need for water loop shut-down or draining. Water, drain and electrical connections line right up to the original installation. The electrical connectors plug into the control box without the need for adapters or wire nut connections. Using Adirondack-Aire replacements eliminate the need for room renovation, redecorating, and piping changes and is the solution that gets your property back in service quickly and at the lowest total cost.



DAMAGE PROTECTION

The standard high-pressure switch and evaporator coil freeze protection stops unit operation before damage occurs should airflow become reduced or obstructed due to dirty coils, obstructed airflow, or motor failure or lock up. A freeze stat protects the water coil from freeze damage due to water temperature or flow problems. The water coil is designed for low water-side pressure drop, eliminating potential pump sizing and water flow problems.



OPTIONS AND ACCESSORIES

- Blower sections
- Return air panels
- Control options
- 115V, 265V/277V (Availability varies by model sizes)
- Wiring configurations
- Hose kits
- Flow control valve

* Various wiring configurations were produced. Details required before placing orders.

SERIES CHS REPLACEMENT CHASSIS

Omega HRP Series



ADIRONDACK AIR

Performance Ratings*

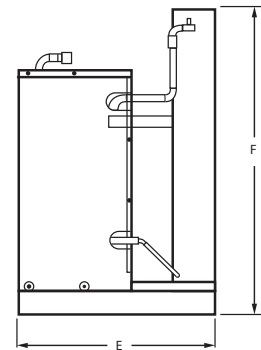
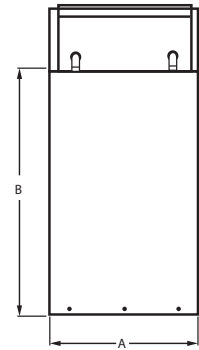
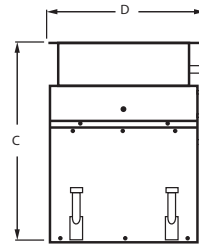
Model	Cool Btuh	Sens Btuh	EER**	Heat Btuh	COP**	CFM (Design)	GPM	Coil PD	Refrigerant
CHS-10	9,900	7,600	12.5	12,000	4.3	300	2.5	1.8'	R-410A
CHS-12	13,200	10,700	14.0	14,500	4.8	475	3.0	2.5'	R-410A
CHS-20	20,800	14,000	15.2	24,400	4.5	625	5.0	3.9'	R-410A
CHS-24	24,200	19,400	13.1	27,300	4.2	800	5.5	5.0'	R-410A

Continuous engineering improvements may result in performance changes without notice.

* Includes 1250Btu/1000 CFM fan heat and 365w/1000 CFM fan power. Fan power and pumping corrections are not included for rating purposes. 208v data shown. 115v and 265v ratings may vary.

Unit Sizes

Model	A	B	C	D	E	F	Chassis Weight (lbs)
	Inches						
CHS-10	11 1/8	22 1/16	15	11 1/2	15	21 1/16	75
CHS-12	11 1/8	22 1/16	15	11 1/2	15	21 1/16	75
CHS-20	13 3/16	23 1/4	18	14	17 7/8	28 3/16	120
CHS-24	17 3/16	23 1/4	22	18	22	29 3/8	130



Rome, New York 13440

Phone (315) 339-2331 • Fax (315) 339-2358

www.ColdPointCorp.com

©2017 Cold Point Corp. All rights reserved.



CPL036 rev. 11-17