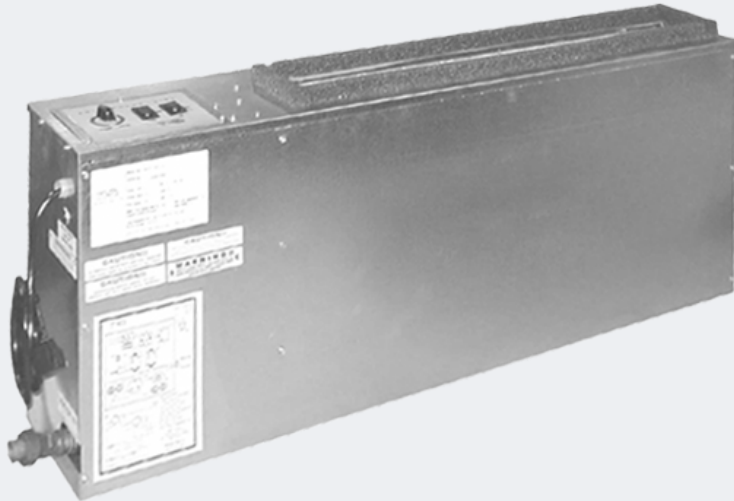


SERIES WC REPLACEMENT CHASSIS

Slant-Fin WC Series



Adirondack-Aire WC series zerOzone replacement chassis units provide environment friendly, high efficiency cooling and heating where individual, quiet control is a priority. This application flexible unit is also a direct replacement for Slant-Fin WC series console water source air conditioners with hydronic heat and mono-flow piping. This is the only available replacement that will work in the original pressure and flow sensitive mono-flow installations. These console units are offered as chassis-only to work with the existing cabinet and heat coil, or with optional cabinet for a complete upgrade.

The chassis contains the compressor, air side heat exchanger, water side heat exchanger, evaporator fan and motor, control components and safety components. The optional room cabinet contains the available mono-flow piping, heat coil, and three-way valve. The optional cabinet is powder painted furniture-grade steel construction with extruded aluminum grille and control door.

The chassis and heat coil are dimensionally identical to the original for a fast, easy, and trouble-free installation. Quality components, careful design and testing and the latest in environment friendly technology advances mean long unit life, user satisfaction and lower energy costs.

Consider the extensive list of standard features which includes: powder painted drain pan, refrigerant circuit access ports, electrostatic air filter (cabinet mounted), evaporator freeze protection, high-pressure over protection and electronic control board. Adirondack-Aire is the replacement solution that the competition can't match. Cold Point Corp. backs the WC with a customer friendly one-year parts and labor warranty and five-year compressor warranty, (see Warranty document for details).

APPLICATION & BENEFITS



FAST AND EASY REPLACEMENT

The Adirondack-Aire WC series zerOzone replacement chassis fits the existing Slant-Fin room cabinets without modification.

Because the WC dimensions and construction details are like the original, replacement work is fast and easy. Water, drain and electrical connections line right up to the existing connections and include all the necessary unions and fittings. Using Adirondack-Aire replacements eliminates the need for room renovation, redecorating, or piping and wiring changes. The WC is the solution that gets your property back in service quickly and at the lowest total cost. Choose the optional room cabinet to give the unit a new look and improve room aesthetics.



DAMAGE PROTECTION

The standard high-pressure switch, evaporator coil freeze protection, and electronic control board stop unit operation before damage occurs, should airflow become reduced or obstructed due to dirty coils, obstructed airflow, or motor failure or lock up. The water coil and optional heat coil are designed for low water-side pressure drop, eliminating potential pump sizing and water flow problems.



OPTIONS AND ACCESSORIES

- Control options
- 115V and 265/277V (Availability varies by model size)
- Heat coil
- Mono-flow piping assembly
- 3-Way valve
- Room cabinet
- Replacement supply air grille for room cabinet
- Line cords

SERIES WC REPLACEMENT CHASSIS

Slant-Fin WC Series



ADIRONDACK AIR

Performance Ratings

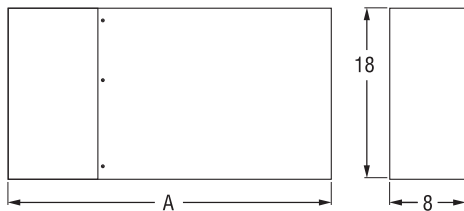
Model	Cool Btuh	Sens Btuh	EER	CFM Hi/Lo	GPM	Coil PD	Refrigerant
WC-06	6,900	5,100	12.0	275/220	1.5	0.2'	R-410A
WC-09	8,300	5,600	12.3	270/260	2.5	0.4'	R-410A
WC-12	12,000	8,300	13.8	385/300	3.0	0.7'	R-410A
WC-16	14,300	10,200	12.3	510/450	3.8	1.1'	R-410A

Continuous engineering improvements may result in performance changes without notice.

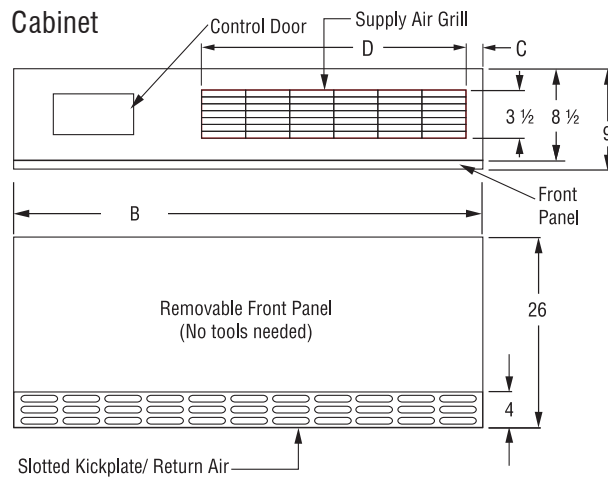
Unit Sizes

Model	A	B	C	D	Chassis Weight (lbs)
	Inches				
WC-06	34	45	8 1/2	20 1/4	90
WC-09	34	45	8 1/2	20 1/4	90
WC-12	44	55	8 5/8	28 3/8	120
WC-16	44	55	8 5/8	28 3/8	135

Chassis



Cabinet



Rome, New York 13440

Phone (315) 339-2331 • Fax (315) 339-2358

www.ColdPointCorp.com

©2017 Cold Point Corp. All rights reserved.



CPL051 rev. 08-17