

ADIRONDACK **AIRE**

## Series 816

### California Heat Pump CHP-RF and ClimateMaster 816

Application Flexible | Fast and Easy Replacement | Damage Protection



# ADIRONDACK-AIRE 816 CHASSIS SERIES

*Replaces California Heat Pump CHP-RF and ClimateMaster 816 and 817*

The Adirondack-Aire 816 Series zerOzone replacement chassis provides environment friendly, high efficiency cooling and heating where individual, quiet control is a priority. This application flexible unit is a direct replacement\* for California Heat Pump CHP-RF and Climate Master 816 and 817 series vertical stacked water source heat pump chassis. The chassis is a part of a complete system, which consists of the chassis, blower section, control box, and furred-in room cabinet with risers. The chassis contains the compressor, air side heat exchanger, water side heat exchanger, and refrigerant circuit control and safety components.

The 816 is dimensionally identical to the original for a fast, easy, and trouble free-installation. Quality components, careful design and testing and the latest in environment friendly technology mean long unit life, user satisfaction, and lower energy costs. Consider the extensive list of standard features which includes: powder painted drain pan, refrigerant circuit access ports, air filter, pull handle, compressor protected suction accumulator, evaporator freeze protection, water coil freezestat, high-pressure over protection, and lock out circuit\*\* Adirondack-Aire is the replacement solution for upgrading old, worn out, inefficient original chassis. Cold Point Corp. backs the 816 with a customer friendly one-year parts and labor warranty and five-year compressor warranty, (see Warranty document for details).

\*Various wiring configurations were produced. See specs and price sheet for details.

\*\* Model specific. May include lock out circuit, 5 minute anti-short cycle timer or interconnect control utilizing control panel logics.

## Standard Features:

- Made in the USA
- Designed for easy installation and compatibility. Dimensionally identical to original California Heat Pump/ClimateMaster chassis
- ETL safety labeled
- Quiet, durable, and efficient compressor with built-in pressure and temperature protection
- Heavy gauge G90 galvanized steel construction
- Powder-painted drain pan
- High efficiency copper tube-aluminum fin evaporator coil
- High efficiency coaxial condenser coil with low water-side pressure drop
- \*\*Lock out circuit with reset at thermostat or circuit breaker
- High pressure switch
- Frost protected cooling
- Water coil freeze protection
- Refrigerant circuit access ports
- Precision selected capillary tube refrigerant control
- Positive shift reversing valve
- Suction accumulator
- Precision charged with zerOzone R-410A refrigerant
- Union water connections or Shepherd's cane FPT (hose kits)
- Chassis pull handle facilitates easy chassis removal and handling
- 1 Inch fiberglass air filter

## Electrical Data\*

| Model  | Compressor Type | Voltage Volt-Hz-Ph | RLA  | LRA  | Total Amps | Ckt Amps | Max Fuse | Min Volts |
|--------|-----------------|--------------------|------|------|------------|----------|----------|-----------|
| 816-10 | Rotary          | 208/230/60/1       | 3.7  | 22.0 | 3.7        | 5.0      | 15       | 197       |
| 816-10 | Rotary          | 265/60/1           | 3.5  | 22.0 | 3.5        | 5.0      | 15       | 240       |
| 816-12 | Rotary          | 208/230/60/1       | 4.7  | 25.0 | 4.7        | 6.0      | 15       | 197       |
| 816-12 | Rotary          | 265/60/1           | 4.2  | 22.0 | 4.2        | 6.0      | 15       | 240       |
| 816-15 | Rotary          | 208/230/60/1       | 5.6  | 29.0 | 5.6        | 7.0      | 15       | 197       |
| 816-15 | Rotary          | 265/60/1           | 5.0  | 28.0 | 5.0        | 7.0      | 15       | 240       |
| 816-20 | Rotary          | 208/230/60/1       | 7.4  | 33.0 | 7.4        | 10.0     | 15       | 197       |
| 816-20 | Rotary          | 265/60/1           | 6.0  | 28.0 | 6.0        | 8.0      | 15       | 240       |
| 816-28 | Recip.          | 208/230/60/1       | 9.4  | 54.0 | 9.4        | 12.0     | 15       | 197       |
| 816-28 | Recip.          | 265/60/1           | 8.0  | 46.0 | 8.0        | 10.0     | 15       | 240       |
| 816-30 | Recip.          | 208/230/60/1       | 9.4  | 54.0 | 9.4        | 12.0     | 15       | 197       |
| 816-30 | Recip.          | 265/60/1           | 8.0  | 46.0 | 8.0        | 10.0     | 15       | 240       |
| 816-36 | Recip.          | 208/230/60/1       | 13.0 | 47.0 | 13.0       | 17.0     | 25       | 197       |
| 816-36 | Recip.          | 265/60/1           | 10.5 | 67.0 | 10.5       | 14.0     | 20       | 240       |

\* Chassis only - Does not include blower or accessory electrical loads.

# 816 CHASSIS APPLICATION & BENEFITS

## Fast and Easy Replacement

The Adirondack-Aire 816 series zerOzone replacement chassis fits the existing California Heat Pump and ClimateMaster room cabinets and works with the existing blower section and control box without modification\*. Because the chassis dimensions and construction details are like the original unit, replacement work is fast and easy. The chassis installs without the need for water loop shut down or draining. Water and drain connections line right up to the original installation. The electrical connectors plug directly into the control box connectors. A chassis pull handle is provided to facilitate easy removal and handling. Using Adirondack-

Aire replacements eliminate the need for room renovation, redecorating, and piping changes. The 816 chassis is the solution to get your property back in service quickly and at the lowest total cost.

## Damage Protection

The standard high-pressure switch and evaporator coil freeze protection stop unit operation before damage occurs, should airflow become reduced or obstructed due to dirty coils, obstructed airflow, or motor failure or lock up. A freezestat protects the water coil from freeze damage due to water temperature or flow problems. The water coil is designed for low water-side pressure drop, eliminating potential pump sizing and water flow problems.

## Options and Accessories

- Blower sections
- Return air panels
- Wiring configurations
- 265/277V (Varies by model)
- Hose kits
- 817 Shepherd's Cane H<sub>2</sub>O Tubing design
- Control options
- Flow control valve
- Motorized valve

\* Various wiring configurations were produced. See specs and price sheet for details.

## Performance Ratings\*

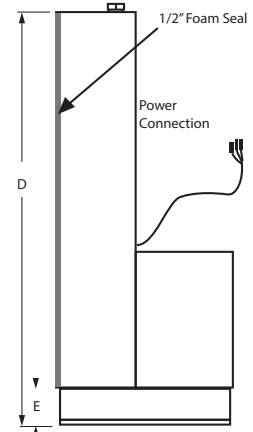
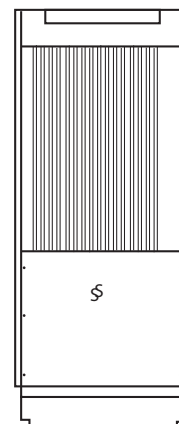
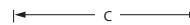
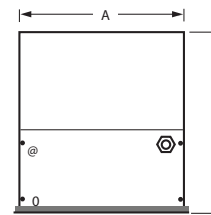
| Motor | Model  | Cool* Btuh | Sens Btuh | EER* | Heat* Btuh | COP* | CFM (Design) | GPM | Coil PD | Refrigerant |
|-------|--------|------------|-----------|------|------------|------|--------------|-----|---------|-------------|
| PSC   | 816-10 | 9,900      | 7,250     | 13.7 | 11,300     | 4.30 | 345          | 2.5 | 1.8'    | R-410A      |
| ECM   | 816-10 | 9,900      | 7,250     | 14.3 | 11,300     | 4.47 | 400          | 2.5 | 1.8'    | R-410A      |
| ECM   | 816-10 | 9,900      | 7,250     | 14.5 | 11,300     | 4.53 | 370          | 2.5 | 1.8'    | R-410A      |
| ECM   | 816-10 | 9,900      | 7,250     | 14.7 | 11,300     | 4.59 | 345          | 2.5 | 1.8'    | R-410A      |
| PSC   | 816-12 | 12,700     | 9,700     | 14.4 | 13,700     | 4.40 | 420          | 3.0 | 2.5'    | R-410A      |
| ECM   | 816-12 | 12,700     | 9,700     | 15.0 | 13,700     | 4.57 | 475          | 3.0 | 2.5'    | R-410A      |
| ECM   | 816-12 | 12,700     | 9,700     | 15.2 | 13,700     | 4.63 | 450          | 3.0 | 2.5'    | R-410A      |
| ECM   | 816-12 | 12,700     | 9,700     | 15.4 | 13,700     | 4.69 | 420          | 3.0 | 2.5'    | R-410A      |
| PSC   | 816-15 | 14,000     | 10,100    | 13.3 | 17,200     | 4.30 | 465          | 3.8 | 4.6'    | R-410A      |
| ECM   | 816-15 | 14,000     | 10,100    | 13.6 | 17,200     | 4.40 | 520          | 3.8 | 4.6'    | R-410A      |
| ECM   | 816-15 | 14,000     | 10,100    | 13.8 | 17,200     | 4.50 | 490          | 3.8 | 4.6'    | R-410A      |
| ECM   | 816-15 | 14,000     | 10,100    | 14.0 | 17,200     | 4.60 | 465          | 3.8 | 4.6'    | R-410A      |
| PSC   | 816-20 | 20,800     | 16,100    | 14.4 | 22,800     | 4.70 | 695          | 5.0 | 3.9'    | R-410A      |
| PSC   | 816-28 | 27,800     | 21,500    | 15.1 | 29,300     | 4.30 | 900          | 7.0 | 8.4'    | R-410A      |
| PSC   | 816-30 | 28,000     | 21,000    | 14.7 | 30,000     | 4.20 | 900          | 7.0 | 8.4'    | R-410A      |
| PSC   | 816-36 | 38,000     | 29,700    | 14.0 | 46,000     | 4.20 | 1,200        | 9.0 | 3.9'    | R-410A      |

Continuous engineering improvements may result in performance changes without notice.

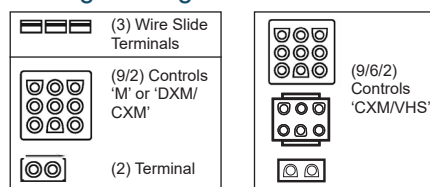
\*Includes Cold Point chassis and Cold Point blower assembly.

## Unit Sizes

| Model  | A      | B      | C      | D       | E      | Filter Size     | Chassis Weight (lbs) |
|--------|--------|--------|--------|---------|--------|-----------------|----------------------|
|        | Inches |        |        |         |        |                 |                      |
| 816-10 | 14 1/2 | 15 5/8 | 15 1/2 | 36 1/4  | 3 3/4  | 14 x 20         | 91                   |
| 816-12 | 14 1/2 | 15 5/8 | 15 1/2 | 36 1/4  | 3 3/4  | 14 x 20         | 91                   |
| 816-15 | 14 1/2 | 15 5/8 | 15 1/2 | 36 1/4  | 3 3/4  | 14 x 20         | 100                  |
| 816-20 | 17 1/2 | 18 5/8 | 18 1/2 | 41 1/4  | 4 3/4  | 17 x 27         | 135                  |
| 816-28 | 21 3/8 | 22 1/2 | 22 1/4 | 40 9/16 | 4 9/16 | 26 5/8 x 20 1/2 | 210                  |
| 816-30 | 21 3/8 | 22 1/2 | 22 1/4 | 40 9/16 | 4 9/16 | 26 5/8 x 20 1/2 | 210                  |
| 816-36 | 21 1/2 | 22 1/2 | 22 3/8 | 41 1/4  | 4 1/2  | 28 3/4 x 20 1/2 | 220                  |



## Wiring Configurations



# INNOVATIVE HEATING AND COOLING SOLUTIONS

Cold Point equipment has been specified in hundreds of projects in these and other applications:  
Direct Replacement | New Construction | Renovation | Commercial & Residential Solutions

## Cold Point values reliability as much as you

Your Cold Point sales representative knows their reputation is on the line with every sale. Therefore, they are as personally invested in your comfort as you are, and take great pride in creating your perfect indoor environment.

## Rest comfortably, knowing Cold Point stands behind our products

The Cold Point Corporation backs our products with a standard warranty that includes labor for the entire first year of ownership. Registered Limited Warranty terms include: 12 month limited warranty on components, 60 month limited warranty on all unit compressors from the date of original installation OR 15 months limited warranty on components, 63 month limited warranty on all unit compressors from the date of original sale, whichever comes first. For all coverage options and complete coverage terms, check with your local Cold Point representative for full details.

## Industry-leading expertise

Cold Point Corporation is the industry-leading supplier of aftermarket comfort solutions for commercial and residential applications. We have over 18 years of experience developing OEM-style replacement products to keep you happy and comfortable. Whether it is a water source heat pump application or an air source PTAC system, Cold Point has the knowledge and products to restore your system to its original operating condition.

## Reliable comfort products backed by the industry experts in OEM-style replacement units

To learn more about how the Cold Point Corporation can help you save time and money on your next project, contact your local Cold Point representative. Call **315-339-2331** to speak with one of our specialists, or e-mail your request to [info@coldpointcorp.com](mailto:info@coldpointcorp.com).

Your Cold Point Representative:



510 Henry Street • Rome, New York 13440  
Phone (315) 339-2331 • Fax (315) 339-2358  
[www.ColdPointCorp.com](http://www.ColdPointCorp.com)

©2023 Cold Point Corp. All rights reserved.



rev. 09-23 CPL001