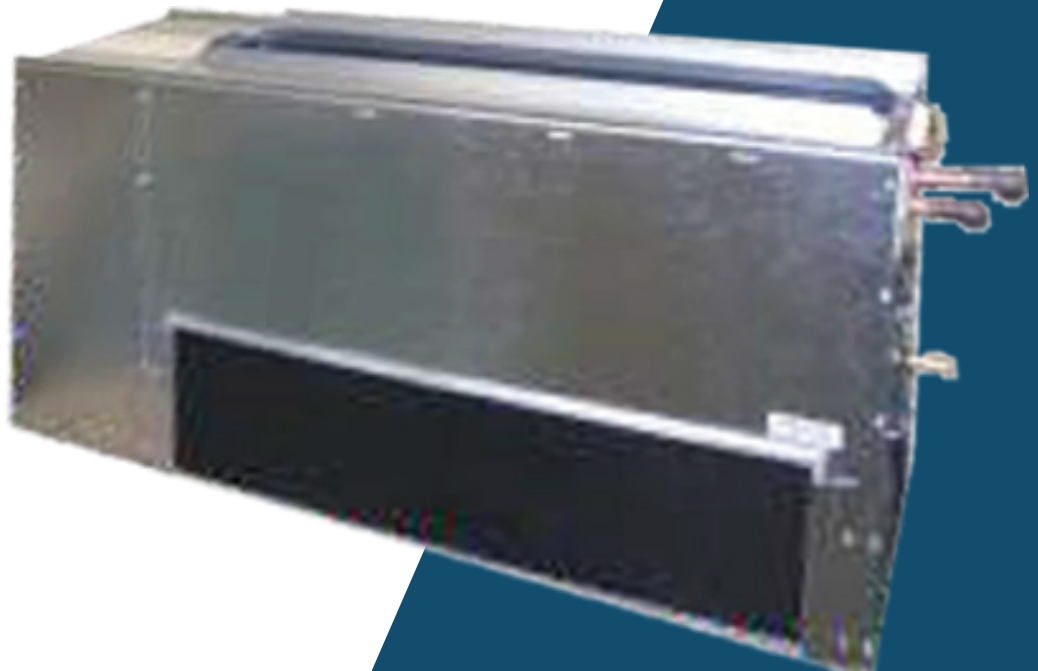


ADIRONDACK AIRE

## Series LM

### Singer / McQuay LM Low Sill Series

Application Flexible | Fast and Easy Replacement | Damage Protection



# ADIRONDACK-AIRE LM CHASSIS SERIES

*Replaces Singer / McQuay LM Low Sill*

Adirondack-Aire LM series zerOzone console units provide environment friendly, high efficiency, cooling and heating where individual, quiet control is a priority. This application flexible unit is also a direct replacement for Singer/McQuay LM series console water source heat pump units. The LM series is also an ideal choice for renovation or new construction console water source heat pump projects. These console units are offered as chassis-only to work with the existing or custom cabinets, or with a new cabinet for a complete installation. The chassis contains the compressor, air side heat exchanger, water side heat exchanger, evaporator fan and motor, control components and safety components. The room cabinet is powder painted furniture-grade steel construction with extruded aluminum grille and control door. The LM series has two chassis sizes, small (models 08, 10, and 12), and large (models 15 and 18).

All chassis sizes are dimensionally identical to the original for a fast, easy, and trouble-free installation. Quality components, careful design and testing and the latest in environment friendly technology advances mean long unit life, user satisfaction and lower energy costs. Consider the extensive list of standard features, which includes: powder painted drain pan, refrigerant circuit access ports, electrostatic air filter, evaporator freeze protection, water coil freeze stat, high-pressure over protection, and electronic control board. Adirondack-Aire is the replacement solution that the competition can't match. Cold Point Corp. backs the LM with a customer friendly one-year parts and labor warranty and five-year compressor warranty, (see Warranty document for details). A full range of options are available, including a low temperature option, boilerless control, hose kits, control options, etc.

## Standard Features:

- Made in the USA
- Designed for easy installation and compatibility. Dimensionally identical to the original Singer/McQuay chassis
- ETL approved
- Quiet, durable, and efficient compressor with built-in pressure and temperature protection
- Heavy gauge G90 galvanized steel construction
- Powder-painted drain pan
- High efficiency copper tube-aluminum fin evaporator coil
- High efficiency coaxial condenser coil with low water-side pressure drop
- Unit-mounted digital controls
- Electronic control board with anti-short cycle protection
- High pressure switch
- Frost-free cooling
- Water coil freeze protection
- Refrigerant circuit access ports
- Capillary expansion
- Positive shift reversing valve
- Precision charged with zerOzone R-410A refrigerant
- 1/2 Inch water connections
- Electrostatic air filter

## Electrical Data\*

| Model | Compressor Type | Voltage Volt-Hz-Ph | Fan  |      | Compressor |      | Total Amps | Ckt Amps | Max Fuse | Min Volts |
|-------|-----------------|--------------------|------|------|------------|------|------------|----------|----------|-----------|
|       |                 |                    | Amps | HP   | RLA        | LRA  |            |          |          |           |
| LM-08 | Rotary          | 115/60/1           | 1.2  | 1/10 | 6.1        | 39.1 | 7.3        | 9.0      | 15       | 104       |
| LM-08 | Rotary          | 208-230/60/1       | 0.4  | 1/10 | 3.0        | 15.0 | 3.4        | 5.0      | 15       | 197       |
| LM-08 | Rotary          | 265/60/1           | 0.4  | 1/10 | 2.7        | 11.0 | 4.1        | 5.0      | 15       | 240       |
| LM-10 | Rotary          | 115/60/1           | 1.2  | 1/10 | 8.0        | 50.0 | 9.2        | 12.0     | 15       | 104       |
| LM-10 | Rotary          | 208-230/60/1       | 0.4  | 1/10 | 3.7        | 22.0 | 4.1        | 6.0      | 15       | 197       |
| LM-10 | Rotary          | 265/60/1           | 0.4  | 1/10 | 3.5        | 22.0 | 3.9        | 5.0      | 15       | 240       |
| LM-12 | Rotary          | 115/60/1           | 1.2  | 1/10 | 9.5        | 50.0 | 10.2       | 13.0     | 20       | 104       |
| LM-12 | Rotary          | 208-230/60/1       | 0.4  | 1/10 | 4.7        | 25.0 | 5.1        | 7.0      | 15       | 197       |
| LM-12 | Rotary          | 265/60/1           | 0.4  | 1/10 | 4.2        | 22.0 | 4.6        | 6.0      | 15       | 240       |
| LM-15 | Rotary          | 208-230/60/1       | 0.6  | 1/10 | 5.6        | 29.0 | 6.2        | 8.0      | 15       | 197       |
| LM-15 | Rotary          | 265/60/1           | 0.6  | 1/10 | 5.0        | 28.0 | 5.6        | 7.0      | 15       | 240       |
| LM-18 | Rotary          | 208-230/60/1       | 0.6  | 1/10 | 7.4        | 33.0 | 8.0        | 10.0     | 15       | 197       |
| LM-18 | Rotary          | 265/60/1           | 0.6  | 1/10 | 6.0        | 28.0 | 6.6        | 9.0      | 15       | 240       |

\* If optional electric heat is selected see Electric Heat Ratings Table: Total Amps, Ampacity and Fuse is the larger Value.



# LM CHASSIS APPLICATION & BENEFITS

## Fast and Easy Replacement

The Adirondack-Aire LM series zerOzone replacement chassis fits the existing Singer/McQuay room cabinets without modification. Because the LM dimensions and construction details are like the original, replacement work is fast and easy. The chassis is field adaptable to either LH or RH applications, offering maximum flexibility and spare chassis interchangeability. Water, drain and electrical connections line right up to the original installation. Using Adirondack-Aire replacements eliminates the need for room renovation, redecorating, or piping and wiring changes. The LM is the solution that

gets your property back in service quickly and at the lowest total cost. Choose the optional room cabinet to give the unit a new look and improve room aesthetics or low temperature option for earth coupled/ground water applications.

## Damage Protection

The standard high-pressure switch, evaporator coil freeze protection, and electronic control board stop unit operation before damage occurs, should airflow become reduced or obstructed due to dirty coils, or motor failure or lock up. A freezestat protects the water coil from freeze damage due to water temperature or flow problems. The water coil is

designed for low water-side pressure drop, eliminating potential pump sizing and water flow problems.

## Options and Accessories

- Room Cabinet (LH and RH available)
- Flow control valve
- Electric or hydronic heat
- Control options
- Valves and unions
- Line cords
- Boilerless
- Hose kits
- Thermostatic expansion valve
- Low temp option

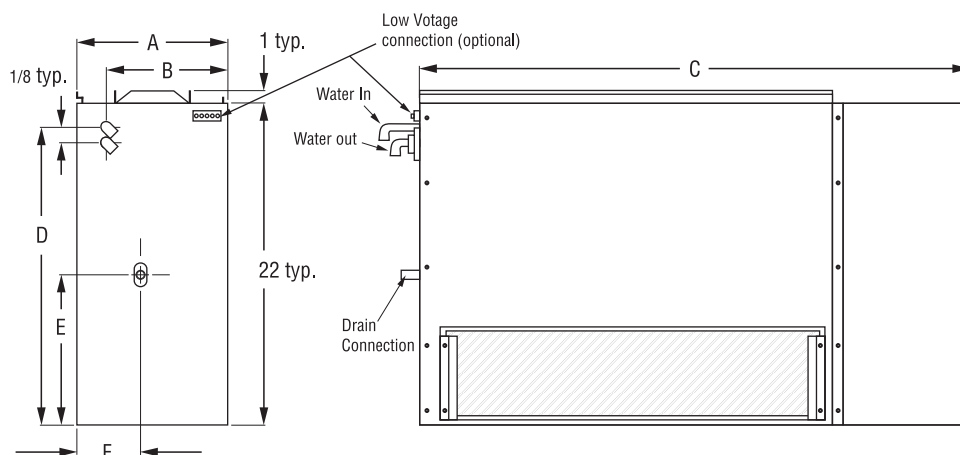
## Performance Ratings

| Model | Cool Btuh       | Sens Btuh | EER  | Heat Btuh | COP | CFM Hi/Lo | GPM | Coil PD | Refrigerant |
|-------|-----------------|-----------|------|-----------|-----|-----------|-----|---------|-------------|
| LM-08 | 7,700           | 6,000     | 13.6 | 9,400     | 4.2 | 275/245   | 2.0 | 1.2'    | R-410A      |
| LM-10 | 9,300           | 8,300     | 12.8 | 11,600    | 4.7 | 400/335   | 2.5 | 1.8'    | R-410A      |
| LM-12 | 12,300          | 9,500     | 12.8 | 14,100    | 4.3 | 405/325   | 3.0 | 2.5'    | R-410A      |
| LM-15 | Consult Factory |           |      |           |     |           |     |         | R-410A      |
| LM-18 | 18,400          | 13,000    | 14.2 | 20,400    | 4.1 | 550/250   | 4.5 | 3.3'    | R-410A      |

Continuous engineering improvements may result in performance changes without notice.

## Unit Sizes

| Model | A       | B      | C      | D       | E       | F      | Water In-Out   | Drain       | Chassis Weight (lbs) |
|-------|---------|--------|--------|---------|---------|--------|----------------|-------------|----------------------|
|       | Inches  |        |        |         |         |        |                |             |                      |
| LM-08 | 10 5/16 | 8 5/16 | 37 5/8 | 20 5/16 | 10 9/16 | 4 5/16 | 1/2 FPT<br>90° | 3/4<br>O.D. | 130                  |
| LM-10 | 10 5/16 | 8 5/16 | 37 5/8 | 20 5/16 | 10 9/16 | 4 5/16 |                |             | 135                  |
| LM-12 | 10 5/16 | 8 5/16 | 37 5/8 | 20 5/16 | 10 9/16 | 4 5/16 |                |             | 146                  |
| LM-15 | 12 3/16 | 10 7/8 | 42 5/8 | 21      | 10 7/16 | 6 1/6  |                |             | 155                  |
| LM-18 | 12 3/16 | 10 7/8 | 42 5/8 | 21      | 10 7/16 | 6 1/6  |                |             | 160                  |



## NEMA Configurations

### Non Locking Plugs/Receptacles

| Voltage   | 125V | 250V | 277V |
|-----------|------|------|------|
| 15A Recp. |      |      |      |
| 15A Plug  |      |      |      |
| 20A Recp. |      |      |      |
| 20A Plug  |      |      |      |
| 30A Recp. |      |      |      |
| 30A Plug  |      |      |      |

277V Line cord N/A as factory installed

# INNOVATIVE HEATING AND COOLING SOLUTIONS

Cold Point equipment has been specified in hundreds of projects in these and other applications:  
Direct Replacement | New Construction | Renovation | Commercial & Residential Solutions

## Cold Point values reliability as much as you

Your Cold Point sales representative knows their reputation is on the line with every sale. Therefore, they are as personally invested in your comfort as you are, and take great pride in creating your perfect indoor environment.

## Rest comfortably, knowing Cold Point stands behind our products

The Cold Point Corporation backs our products with a standard warranty that includes labor for the entire first year of ownership. Registered Limited Warranty terms include: 12 month limited warranty on components, 60 month limited warranty on all unit compressors from the date of original installation OR 15 months limited warranty on components, 63 month limited warranty on all unit compressors from the date of original sale, whichever comes first. For all coverage options and complete coverage terms, check with your local Cold Point representative for full details.

## Industry-leading expertise

Cold Point Corporation is the industry-leading supplier of aftermarket comfort solutions for commercial and residential applications. We have over 18 years of experience developing OEM-style replacement products to keep you happy and comfortable. Whether it is a water source heat pump application or an air source PTAC system, Cold Point has the knowledge and products to restore your system to its original operating condition.

## Reliable comfort products backed by the industry experts in OEM-style replacement units

To learn more about how the Cold Point Corporation can help you save time and money on your next project, contact your local Cold Point representative. Call **315-339-2331** to speak with one of our specialists, or e-mail your request to [info@coldpointcorp.com](mailto:info@coldpointcorp.com).

Your Cold Point Representative:



510 Henry Street • Rome, New York 13440  
Phone (315) 339-2331 • Fax (315) 339-2358

[www.ColdPointCorp.com](http://www.ColdPointCorp.com)

©2023 Cold Point Corp. All rights reserved.



rev. 09-23 CPL017