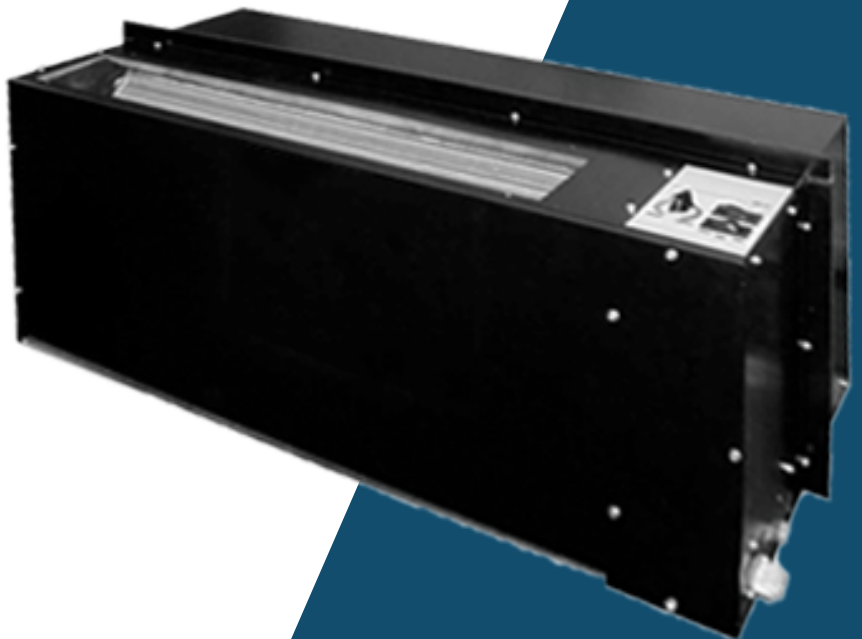


ADIRONDACK ▲ AIRE

## Series RM

**Embassy, Weather Twin RM, TPI Ra-Matic, Zone Aire S/SC/RM, IslandAire RM and RetroAire RC 20**

Application Flexible | Fast and Easy Replacement | Damage Protection



# ADIRONDACK-AIRE RM CHASSIS SERIES

*Replaces Embassy, Weather Twin RM, TPI Ra-Matic, Zone Aire S/SC/RM, IslandAire RM and RetroAire RC 20*

The Adirondack-Aire RM Series zerOzone chassis provides environment friendly, high efficiency cooling and heating where individual, quiet control is a priority. This application flexible unit is also a direct replacement for Weather-Twin RM, TPI Ra-Matic, and Zone Aire S/SC/RM, IslandAire RM and RetroAire RC 20. The chassis is a part of a complete system, which consists of the chassis, wall sleeve, outdoor louver, room cabinet, and sometimes a heat section. The chassis contains the compressor, indoor and outdoor heat exchangers, fan motors and fans, and controls.

The RM is dimensionally compatible with the original for a fast, easy, and trouble-free installation. Quality components, careful design and testing and the latest in environment friendly technology mean long unit life, user satisfaction, and lower energy costs. Consider the extensive list of standard features, which includes: Rust-Block\* corrosion protection system, evaporator freeze protection, permanent electrostatic air filter, pull handle, and high-pressure over protection. Adirondack-Aire is the replacement solution that the competition can't match. Cold Point Corp. backs the RM with a customer friendly one-year parts and labor warranty and five-year compressor warranty, (see Warranty document for details).

\* Rust-Block corrosion protection system consists of: Heavy gauge galvanized steel construction with powder paint finished condenser and evaporator pans; galvanized or aluminum condenser fan, stainless steel compressor and condenser motor studs; Magnaguard and/or stainless steel screws and fasteners.

## Standard Features:

- Made in the USA
- Designed for easy installation. Dimensionally compatible with original Weather Twin, TPI, Zone Aire, IslandAire and RetroAire chassis
- Exclusive Rust-Block corrosion protection
- High efficiency PSC fan motors with built-in temperature protection
- ETL approved
- Quiet, durable, and efficient compressor with built-in pressure and temperature protection
- Heavy gauge G60 galvanized steel construction with powder coat painted condenser and evaporator pans
- High efficiency copper tube-aluminum fin evaporator and condenser coils
- Slinger condenser fan
- Condensate re-evaporation
- High pressure switch with manual reset
- Frost free low ambient cooling\*
- Electrostatic air filter
- Chassis pull handle facilitates easy chassis removal and handling
- Capillary expansion
- Precision charged with zerOzone R-410A refrigerant
- LCDI line cord (ex. 265V)

\* Cooling operation locks out at 34°F outdoor temperature and restarts at 55° F.

## Electrical Data\*

Model	Compressor Type	Voltage Volt-Hz-Ph	Evaporator Motor		Condenser Motor		Compressor		Total Amps	Ckt Ampac	Max Fuse	Min Volts	Line Cord
			Amps	HP	Amps	HP	RLA	LRA					
RM-09	Rotary	115/60/1	1.2	1/10	1.2	1/10	8.0	50.0	10.4	12.4	20	104	5-20P
RM-09	Rotary	208/230/60/1	0.6	1/10	0.6	1/10	3.7	22.0	4.9	5.8	15	197	6-15P
RM-09	Rotary	265/60/1	0.6	1/10	0.6	1/10	3.5	22.0	4.7	5.6	15	240	N/A
RM-12	Rotary	115/60/1	1.2	1/10	1.2	1/10	10.5	57.0	12.9	15.5	25	104	5-20P
RM-12	Rotary	208/230/60/1	0.6	1/10	0.6	1/10	5.2	26.0	6.4	7.7	15	197	6-15P
RM-12	Rotary	265/60/1	0.6	1/10	0.6	1/10	4.3	25.0	5.5	6.6	15	240	N/A
RM-15	Rotary	208/230/60/1	0.6	1/10	1.6	1/4	6.6	33.0	8.8	10.5	15	197	6-15P
RM-15	Rotary	265/60/1	0.6	1/10	1.6	1/4	5.6	28.0	7.8	9.2	15	240	N/A
RM-18	Rotary	208/230/60/1	0.6	1/10	1.6	1/4	8.5	33.0	10.7	12.8	20	197	6-20P
RM-18	Rotary	265/60/1	0.6	1/10	1.6	1/4	6.0	28.0	8.2	9.7	15	240	N/A

\* If electric heat option is selected see Electric Heat Ratings Table: Total Amps, Ampacity and Fuse Size is the larger value.



# RM SERIES CHASSIS APPLICATION & BENEFITS

## Fast and Easy Replacement

The Adirondack-Aire RM series replacement chassis fits the existing wall sleeves and room cabinets without modification. Because the chassis dimensions and construction details are like the original, replacement work is fast and easy. A chassis pull handle is provided to facilitate easy removal and handling. Using Adirondack-Aire replacements eliminates the need for room and exterior wall renovation and is the solution that gets your property back in service quickly and at

the lowest total cost. Choose the optional room cabinet to give the unit a brand new look and improve room aesthetics.

## Damage Protection

A premium feature usually found only in expensive commercial systems, the standard high-pressure switch and evaporator freeze protection stop unit operation before damage occurs, should airflow become reduced or obstructed due to dirty coils, obstructed airflow, or motor failure or lock up. A slinger condenser fan and draw-thru airflow pattern re-evaporates

condensate and makes cleaning dirty coils easy. Condensate re-evaporation and the Rust-Block system assure a stain-free building exterior.

## Options and Accessories

- Electric heat or hydronic heat
- Control options
- Motorized fresh air
- Cabinets
- Wall sleeves
- Louvers
- 115V and 265/277V (availability varies by model size)

## Performance Ratings\*

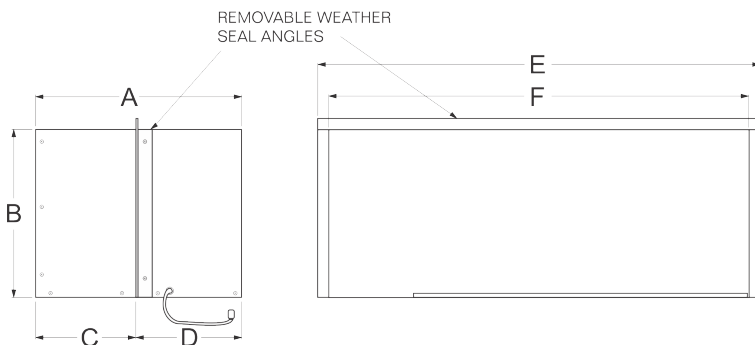
Model	Cool Btuh	Sens Btuh	EER	CFM Hi/Lo*	Cond. Fan Type/ Air Direction	Refrigerant
RM-09	8,500	6,500	9.0	400/310	Axial / Draw Thru	R-410A
RM-12	11,100	7,300	8.5	375/300		R-410A
RM-15	15,000	9,600	8.2	455/360		R-410A
RM-18	15,600	10,100	7.9	460/395		R-410A

Continuous engineering improvements may result in performance changes without notice.

\* Dry coil airflow

## Unit Sizes

Model	A	B	C	D	E	F	Chassis Weight (lbs)
	Inches						
RM-09	18	14 3/4	9 1/8	8 7/8	37	35 3/4	115
RM-12	18	14 3/4	9 1/8	8 7/8	37	35 3/4	115
RM-15	18	14 3/4	9 1/8	8 7/8	37	35 3/4	150
RM-18	18	14 3/4	9 1/8	8 7/8	37	35 3/4	161



## NEMA Configurations

Non Locking Plugs/Receptacles

Voltage	125V	250V	277V
15A Recp.	5-15R 	6-15R 	7-15R 
115A Plug	5-15P 	6-15P 	7-15P 
20A Recp.	5-20R 	6-20R 	7-20R 
20A Plug	5-20P 	6-20P 	7-20P 
30A Recp.	5-30R 	6-30R 	7-30R 
30A Plug	5-30P 	6-30P 	7-30P 

## Electrical Heat Ratings (Optional)

Heater No. (WCU)	Volt	Watts	Btuh	HTR Amps	Total HTR Amps	Min Ckt Amps	Max Fuse	Line Cord
2	208	1,800	6,140	8.7	9.3	12.0	15	6-15P
	230	2,200	7,500	9.6	10.2	13.0	15	6-15P
	265	2,900	9,900	10.9	11.5	15.0	15	N/A
	277	3,190	10,900	11.5	12.1	15.0	15	N/A
3	208	2,450	8,350	11.8	12.4	16.0	20	6-20P
	230	3,000	10,200	13.1	13.7	17.0	20	6-20P
	265	4,000	13,640	15.1	15.7	20.0	20	N/A
	277	4,350	14,830	15.7	16.3	21.0	25	N/A
4	208	3,270	11,150	15.7	16.3	21.0	25	6-30P
	230	4,000	13,640	17.4	18.0	23.0	30	6-30P

# INNOVATIVE HEATING AND COOLING SOLUTIONS

Cold Point equipment has been specified in hundreds of projects in these and other applications:  
Direct Replacement | New Construction | Renovation | Commercial & Residential Solutions

## Cold Point values reliability as much as you

Your Cold Point sales representative knows their reputation is on the line with every sale. Therefore, they are as personally invested in your comfort as you are, and take great pride in creating your perfect indoor environment.

## Rest comfortably, knowing Cold Point stands behind our products

The Cold Point Corporation backs our products with a standard warranty that includes labor for the entire first year of ownership. Registered Limited Warranty terms include: 12 month limited warranty on components, 60 month limited warranty on all unit compressors from the date of original installation OR 15 months limited warranty on components, 63 month limited warranty on all unit compressors from the date of original sale, whichever comes first. For all coverage options and complete coverage terms, check with your local Cold Point representative for full details.

## Industry-leading expertise

Cold Point Corporation is the industry-leading supplier of aftermarket comfort solutions for commercial and residential applications. We have over 18 years of experience developing OEM-style replacement products to keep you happy and comfortable. Whether it is a water source heat pump application or an air source PTAC system, Cold Point has the knowledge and products to restore your system to its original operating condition.

## Reliable comfort products backed by the industry experts in OEM-style replacement units

To learn more about how the Cold Point Corporation can help you save time and money on your next project, contact your local Cold Point representative. Call **315-339-2331** to speak with one of our specialists, or e-mail your request to [info@coldpointcorp.com](mailto:info@coldpointcorp.com).

Your Cold Point Representative:



510 Henry Street • Rome, New York 13440  
Phone (315) 339-2331 • Fax (315) 339-2358  
[www.ColdPointCorp.com](http://www.ColdPointCorp.com)

©2023 Cold Point Corp. All rights reserved.



rev. 10-23 CPL028