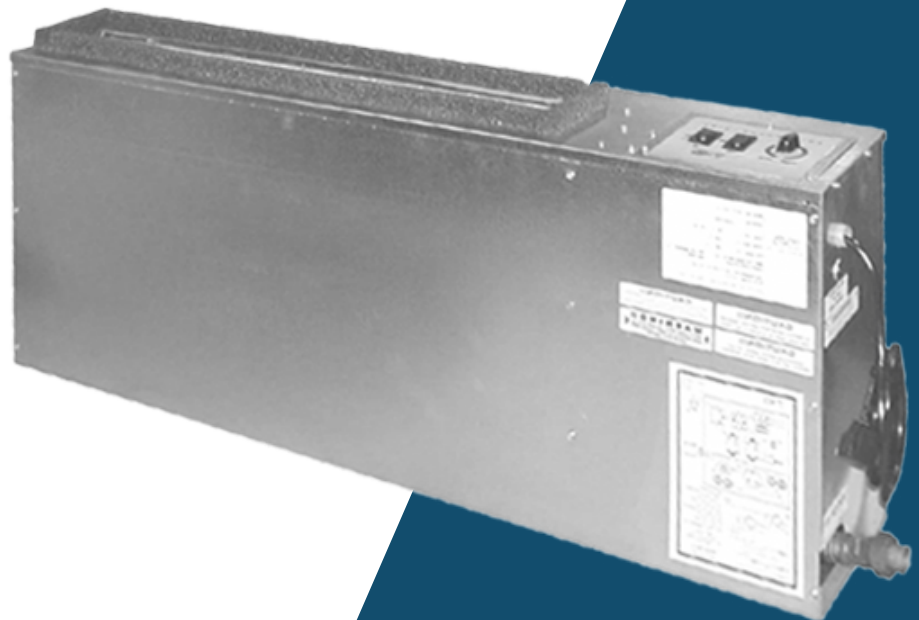


ADIRONDACK ▲ AIRE

## Series WC

### Slant-Fin WC Series

Application Flexible | Fast and Easy Replacement | Damage Protection



# ADIRONDACK-AIRE WC CHASSIS SERIES

## Replaces Slant-Fin WC

Adirondack-Aire WC series zerOzone replacement chassis units provide environment friendly, high efficiency cooling and heating where individual, quiet control is a priority. This application flexible unit is also a direct replacement for Slant-Fin WC series console water source air conditioners with hydronic heat and mono-flow piping. This is the only available replacement that will work in the original pressure and flow sensitive mono-flow installations. These console units are offered as chassis-only to work with the existing cabinet and heat coil, or with optional cabinet for a complete upgrade. The chassis contains the compressor, air side heat exchanger, water side heat exchanger, evaporator fan and motor, control components and safety components. The optional room cabinet contains the available mono-flow piping, heat coil, and three-way valve. The optional cabinet is powder painted furniture-grade steel construction with extruded aluminum grille and control door.

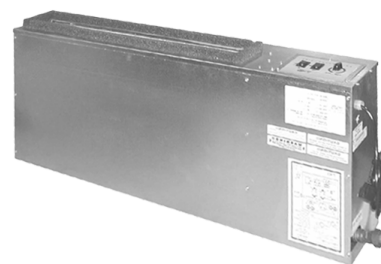
The chassis and heat coil are dimensionally identical to the original for a fast, easy, and trouble-free installation. Quality components, careful design and testing and the latest in environment friendly technology advances mean long unit life, user satisfaction and lower energy costs. Consider the extensive list of standard features which includes: powder painted drain pan, refrigerant circuit access ports, electrostatic air filter (cabinet mounted), evaporator freeze protection, high-pressure over protection and electronic control board. Adirondack-Aire is the replacement solution that the competition can't match. Cold Point Corp. backs the WC with a customer friendly one-year parts and labor warranty and five-year compressor warranty, (see Warranty document for details).

### Standard Features:

- Made in the USA
- Designed for easy installation and compatibility. Dimensionally identical to the original Slant-Fin chassis
- ETL approved
- Quiet, durable, and efficient compressor with built-in pressure and temperature protection
- Heavy gauge G90 galvanized steel construction
- Powder-painted drain pan
- High efficiency copper tube-aluminum fin evaporator coil
- High efficiency coaxial condenser coil with low water-side pressure drop
- Unit-mounted digital controls
- High pressure switch
- Frost-free cooling
- Water coil freeze protection
- Refrigerant circuit access ports
- Precision charged with zerOzone R-410A refrigerant
- High water temperature compressor lock out
- Capillary expansion
- Electrostatic air filter (cabinet mounted)

### Electrical Data

Model	Compressor Type	Voltage Volt-Hz-Ph	Fan		Compressor		Total Amps	Ckt Amps	Max Fuse	Min Volts
			Amps	HP	RLA	LRA				
WC-06	Rotary	115/60/1	1.2	1/10	5.1	27.0	6.3	8	15	104
WC-09	Recip.	115/60/1	1.2	1/10	8.0	50.0	9.2	11	15	104
WC-09	Recip.	208/230/60/1	0.6	1/10	3.7	22.0	4.3	5	15	197
WC-12	Recip.	115/60/1	1.2	1/10	9.5	50.0	10.7	13	20	104
WC-12	Recip.	208/230/60/1	0.6	1/10	4.7	25.0	5.3	7	15	197
WC-16	Recip.	208/230/60/1	0.6	1/10	5.6	29.0	6.2	8	15	197



# WC CHASSIS APPLICATION & BENEFITS

## Fast and Easy Replacement

The Adirondack-Aire WC series zerOzone replacement chassis fits the existing Slant-Fin room cabinets without modification. Because the WC dimensions and construction details are like the original, replacement work is fast and easy. Water, drain and electrical connections line right up to the existing connections and include all the necessary unions and fittings. Using Adirondack-Aire replacements eliminates the need for room renovation, redecorating, or piping and wiring changes. The WC is the solution that gets your property back in service quickly

and at the lowest total cost. Choose the optional room cabinet to give the unit a new look and improve room aesthetics.

## Damage Protection

The standard high-pressure switch, evaporator coil freeze protection, and electronic control board stop unit operation before damage occurs, should airflow become reduced or obstructed due to dirty coils, obstructed airflow, or motor failure or lock up. The water coil and optional heat coil are designed for low water-side pressure drop, eliminating potential pump sizing and water flow problems.

## Options and Accessories

- Control options
- 115V and 265/277V (Availability varies by model size)
- Heat coil
- Mono-flow piping assembly
- 3-Way valve
- Room cabinet
- Replacement supply air grille for room cabinet
- Line cords

## Performance Ratings

Model	Cool Btuh	Sens Btuh	EER	CFM Hi/Lo	GPM	Coil PD	Refrigerant
WC-06	6,900	5,100	12.0	275/220	1.5	0.2'	R-410A
WC-09	8,300	5,600	12.3	270/260	2.5	0.4'	R-410A
WC-12	12,000	8,300	13.8	385/300	3.0	0.7'	R-410A
WC-16	14,300	10,200	12.3	510/450	3.8	1.1'	R-410A

Continuous engineering improvements may result in performance changes without notice.

## Unit Sizes

Model	A	B	C	D	Chassis Weight (lbs)
	Inches				
WC-06	34	45	8 1/2	20 1/4	90
WC-09	34	45	8 1/2	20 1/4	90
WC-12	44	55	8 5/8	28 3/8	120
WC-16	44	55	8 5/8	28 3/8	135

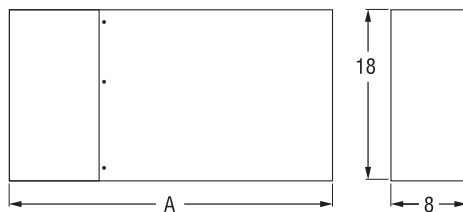
## NEMA Configurations

### Non Locking Plugs/Receptacles

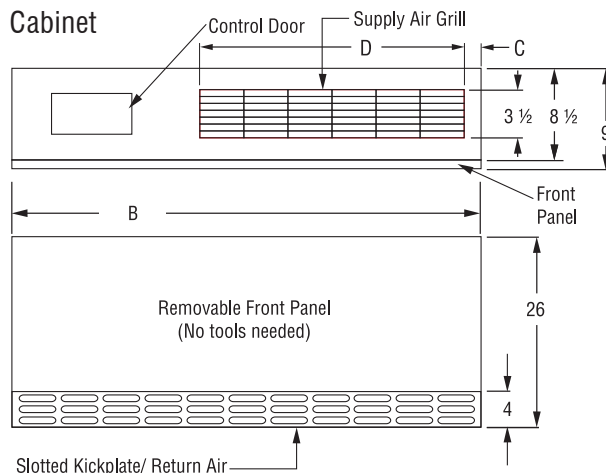
Voltage	125V	250V	277V
15A Recp.			
15A Plug			
20A Recp.			
20A Plug			
30A Recp.			
30A Plug			

\*277V Line cord N/A as factory installed.

## Chassis



## Cabinet



# INNOVATIVE HEATING AND COOLING SOLUTIONS

Cold Point equipment has been specified in hundreds of projects in these and other applications:  
Direct Replacement | New Construction | Renovation | Commercial & Residential Solutions

## Cold Point values reliability as much as you

Your Cold Point sales representative knows their reputation is on the line with every sale. Therefore, they are as personally invested in your comfort as you are, and take great pride in creating your perfect indoor environment.

## Rest comfortably, knowing Cold Point stands behind our products

The Cold Point Corporation backs our products with a standard warranty that includes labor for the entire first year of ownership. Registered Limited Warranty terms include: 12 month limited warranty on components, 60 month limited warranty on all unit compressors from the date of original installation OR 15 months limited warranty on components, 63 month limited warranty on all unit compressors from the date of original sale, whichever comes first. For all coverage options and complete coverage terms, check with your local Cold Point representative for full details.

## Industry-leading expertise

Cold Point Corporation is the industry-leading supplier of aftermarket comfort solutions for commercial and residential applications. We have over 18 years of experience developing OEM-style replacement products to keep you happy and comfortable. Whether it is a water source heat pump application or an air source PTAC system, Cold Point has the knowledge and products to restore your system to its original operating condition.

## Reliable comfort products backed by the industry experts in OEM-style replacement units

To learn more about how the Cold Point Corporation can help you save time and money on your next project, contact your local Cold Point representative. Call **315-339-2331** to speak with one of our specialists, or e-mail your request to [info@coldpointcorp.com](mailto:info@coldpointcorp.com).

Your Cold Point Representative:



510 Henry Street • Rome, New York 13440  
Phone (315) 339-2331 • Fax (315) 339-2358  
[www.ColdPointCorp.com](http://www.ColdPointCorp.com)

©2023 Cold Point Corp. All rights reserved.



rev. 10-23 CPL018