

ADIRONDACK **AIRE**

Series WPC

Command-Aire SWPC Series

Application Flexible | Fast and Easy Replacement | Damage Protection



ADIRONDACK-AIRE WPC CHASSIS SERIES

Replaces Command-Aire SWPC

Adirondack-Aire WPC series zerOzone console units provide environment friendly, high efficiency, cooling and heating where individual, quiet control is a priority. This application flexible unit is also a direct replacement for Command-Aire SWPC series console water source heat pump units. The WPC console units are offered as chassis only to work with the existing or custom room cabinets, or with a new cabinet for a complete installation. The chassis contains the compressor, air side heat exchanger, water side heat exchanger, evaporator fan and motor, control components, and safety components. The optional room cabinet is powder painted furniture-grade steel construction with extruded aluminum grille and control door.

The chassis is dimensionally identical to the original WPC and available with LH or RH piping and wiring for a fast, easy, and trouble-free installation. Quality components, careful design and testing, and the latest in environment friendly technology advances mean long unit life, user satisfaction, and lower energy costs. Consider the extensive list of standard features, which includes: powder painted drain pan, refrigerant circuit filter-drier, electrostatic air filter (cabinet mounted), evaporator freeze protection, water coil freezestat, high-pressure over protection, and electronic control board. These features set Adirondack-Aire apart as the choice that the competition can't match. Cold Point Corp. backs the WPC with a customer friendly one-year parts and labor warranty and five-year compressor warranty, (see Warranty document for details).

Standard Features:

- Made in the USA
- Designed for easy installation and compatibility. Dimensionally identical to the original Command-Aire chassis
- ETL approved
- Quiet, durable, and efficient compressor with built-in pressure and temperature protection
- Heavy gauge G90 galvanized steel construction
- Powder-painted drain pan
- High efficiency copper tube-aluminum fin evaporator coil
- High efficiency coaxial condenser coil with low water-side pressure drop
- Unit-mounted digital controls
- Electronic control board with anti-short cycle protection
- High pressure switch
- Frost-free cooling
- Water coil freeze protection
- Refrigerant circuit access ports
- Capillary expansion
- Positive shift reversing valve
- Precision charged with zerOzone R-410A refrigerant
- 1/2 Inch water connections
- Electrostatic air filter

Electrical Data*

Model	Compressor Type	Voltage Volt-Hz-Ph	Fan		Compressor		Total Amps	Ckt Amps	Max Fuse	Min Volts
			Amps	HP	RLA	LRA				
WPC-07	Rotary	115/60/1	1.2	1/10	7.0	46.0	8.2	9.95	15	104
WPC-07	Rotary	208-230/60/1	0.4	1/10	3.0	15.0	3.4	4.15	15	197
WPC-07	Rotary	265/60/1	0.4	1/10	2.7	11.0	3.1	3.78	15	240
WPC-10	Rotary	115/60/1	1.2	1/10	8.0	50.0	9.2	11.20	15	104
WPC-10	Rotary	208-230/60/1	0.4	1/10	3.7	22.0	4.1	5.03	15	197
WPC-10	Rotary	265/60/1	0.4	1/10	3.5	22.0	3.9	4.78	15	240
WPC-12	Rotary	115/60/1	1.2	1/10	8.0	50.0	9.2	11.20	15	104
WPC-12	Rotary	208/230/60/1	0.4	1/10	4.7	25.0	5.1	6.28	15	197
WPC-12	Rotary	265/60/1	0.4	1/10	4.2	22.0	4.6	5.65	15	240
WPC-15	Rotary	208/230/60/1	Consult Factory							
WPC-15	Rotary	265/60/1	Consult Factory							
WPC-18	Rotary	208/230/60/1	0.4	1/10	7.5	33.0	7.8	9.70	15	197
WPC-18	Rotary	265/60/1	0.4	1/10	6.0	28.0	6.4	7.90	15	240

* If optional electric heat is selected see Electric Heat Ratings Table: Total Amps, Ampacity and Fuse is the larger value.



WPC CHASSIS APPLICATION & BENEFITS

Fast and Easy Replacement

The Adirondack-Aire WPC series zerOzone console water source heat pump is the unmatched choice for new construction, renovation and direct replacement projects. It includes the added benefit of being a direct replacement chassis that fits the existing Command-Aire room cabinets without modification. The chassis construction physically matches the original with water, drain and electrical size and locations that line right up to the existing connections. For new installations, this thoughtfully designed unit offers unmatched ease of installation and service, quiet operation,

and long, trouble-free operation. The WPC is the solution that gets your property back in service quickly and at the lowest total cost. Choose the optional room cabinet for new installations or to give replacement installations a new look and improve room aesthetics.

Damage Protection

The standard high-pressure switch, evaporator coil freeze protection and electronic control board stop unit operation before damage occurs, should airflow become reduced or obstructed due to dirty filters, obstructed airflow, or motor failure. A freestat protects the water coil from freeze damage due to water temperature

or flow problems. The water coil utilizes a high efficiency 'convoluted' tube design that minimizes waterside fouling.

Options and Accessories

- Room cabinet (LH and RH available)
- Control options
- 115V and 265/277V (availability varies by model size)
- Flow control valve (field installed)
- Valves and unions
- Extended operating range
- Emergency management relay
- Electric heat (boilerless)
- Hose kits
- Customer-specified custom features

Performance Ratings

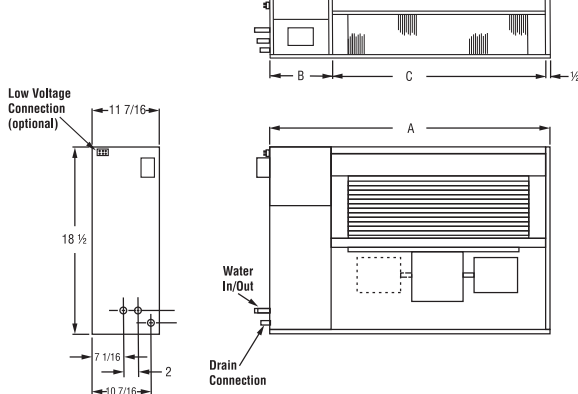
Model	Cool Btuh	Sens Btuh	EER	Heat Btuh	COP	CFM Hi/Lo	GPM	Coil PD	Refrigerant
WPC-07	6,400	5,500	12.4	7,600	4.6	275/260	1.5	0.7'	R-410A
WPC-10	9,700	8,300	12.0	11,800	4.3	430/350	2.5	1.8'	R-410A
WPC-12	12,700	9,100	12.0	14,200	4.3	430/345	3.0	2.5'	R-410A
WPC-15	Consult Factory								R-410A
WPC-18	17,900	13,600	13.4	19,500	4.2	545/410	4.5	3.3'	R-410A

Continuous engineering improvements may result in performance changes without notice.

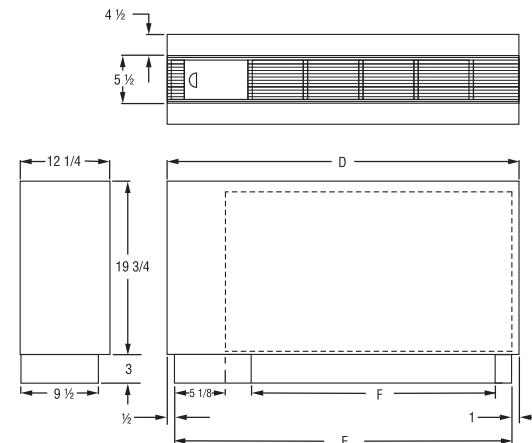
Unit Sizes

Model	A	B	C	D	E	F	Water In-Out	Drain	Chassis Weight (lbs)
WPC-07	36	13 11/16	21 9/16	42	40 7/8	20 7/8	5/8 O.D.	5/8 I.D.	94
WPC-10	42	13 11/16	27 9/16	48	46 7/8	26 7/8			115
WPC-12	42	13 11/16	27 9/16	48	46 7/8	26 7/8			120
WPC-15	52	13 11/16	35 9/16	58	56 7/8	34 7/8			
WPC-18	52	13 11/16	35 9/16	58	56 7/8	34 7/8			131

Chassis



Cabinet



NEMA Configurations

Non Locking Plugs/Receptacles

Voltage	125V	250V	277V
15A Recp.			
15A Plug			
20A Recp.			
20A Plug			
30A Recp.			
30A Plug			

277V Line cord N/A as factory installed

INNOVATIVE HEATING AND COOLING SOLUTIONS

Cold Point equipment has been specified in hundreds of projects in these and other applications:
Direct Replacement | New Construction | Renovation | Commercial & Residential Solutions

Cold Point values reliability as much as you

Your Cold Point sales representative knows their reputation is on the line with every sale. Therefore, they are as personally invested in your comfort as you are, and take great pride in creating your perfect indoor environment.

Rest comfortably, knowing Cold Point stands behind our products

The Cold Point Corporation backs our products with a standard warranty that includes labor for the entire first year of ownership. Registered Limited Warranty terms include: 12 month limited warranty on components, 60 month limited warranty on all unit compressors from the date of original installation OR 15 months limited warranty on components, 63 month limited warranty on all unit compressors from the date of original sale, whichever comes first. For all coverage options and complete coverage terms, check with your local Cold Point representative for full details.

Industry-leading expertise

Cold Point Corporation is the industry-leading supplier of aftermarket comfort solutions for commercial and residential applications. We have over 18 years of experience developing OEM-style replacement products to keep you happy and comfortable. Whether it is a water source heat pump application or an air source PTAC system, Cold Point has the knowledge and products to restore your system to its original operating condition.

Reliable comfort products backed by the industry experts in OEM-style replacement units

To learn more about how the Cold Point Corporation can help you save time and money on your next project, contact your local Cold Point representative. Call **315-339-2331** to speak with one of our specialists, or e-mail your request to info@coldpointcorp.com.

Your Cold Point Representative:



510 Henry Street • Rome, New York 13440
Phone (315) 339-2331 • Fax (315) 339-2358
www.ColdPointCorp.com

©2023 Cold Point Corp. All rights reserved.



rev. 10-23 CPL020