



Adirondack Aire

BY COLD POINT



Commercial Product Line

Versatile Commercial and Residential Comfort Solutions

Water Source Products | Air Source Products



WATER SOURCE PRODUCTS

ClimateMaster Replacements



816 / 817 Chassis Series

- 15 EER and 4.4 COP
- Unit sizes: 10k, 12k, 15k, 20k, 30k, 36k (350 to 1,200 CFM)
- Replaces California Heat Pump CHP-RF and ClimateMaster 816 and 817 chassis



816 Slant Coil Chassis Series

- 13 EER and 4.2 COP
- Unit sizes: 10k, 12k, 15k, 24k, 36k (350 to 1,200 CFM)
- Replaces ClimateMaster 816 Slant Coil chassis



TRM Chassis Series

- 15 EER and 4.4 COP
- Unit sizes: 09k, 12k, 15k, 18k, 24k, 30k, 36k (325 to 1,200 CFM)
- Replaces ClimateMaster TRM series chassis



800 Chassis Series

- 13 EER and 4.5 COP
- Unit sizes: 08k, 10k, 12k (250 to 420 CFM)
- Replaces ClimateMaster/Friedrich 800 chassis



801 Chassis Series

- 14 EER and 4.5 COP
- Unit sizes: 08k, 10k, 12k, 15k, 19k (250 to 650 CFM)
- Replaces ClimateMaster/Friedrich 801 chassis



CS Slope Top Console Series

- 15 EER and 4.7 COP
- Unit sizes: 08k, 10k, 12k, 15k, 18k (250 to 600 CFM)
- Replacement Applications



814 Chassis Series

- 13 EER and 4.2 COP
- Unit sizes: 10k, 12k (350 to 400 CFM)
- Replaces ClimateMaster 814 series

Command-Aire / Trane Replacements



GET Chassis Series

- 14 EER and 4.3 COP
- Unit sizes: 09k, 12k, 15k, 18k (300 to 650 CFM)
- Replaces Trane GET chassis



WPV Chassis Series

- 14 EER and 4.3 COP
- Unit sizes: 10k, 12k, 20k, 26k, 33k (360 to 1,100 CFM)
- Replaces Command-Aire WPV and Trane WPR chassis



WPC Chassis Series

- 13 EER and 4.3 COP
- Unit sizes: 07k, 10k, 12k (230 to 400 CFM)
- Replaces SWPC Command-Aire chassis

Singer/McQuay / Snyder General Replacements



HCA Chassis Series

- 15 EER and 4.4 COP
- Unit sizes: 08k, 10k, 12k, 15k, 20k, 24k (250 to 800 CFM)
- Replaces Singer/McQuay HC chassis



HCC Chassis Series

- 13 EER and 4.4 COP
- Unit sizes: 10k, 12k, 20k, 24k (350 to 800 CFM)
- Replaces Singer/McQuay HCC chassis



VF Chassis Series

- 15 EER and 4.4 COP
- Unit sizes: 10k, 12k, 15k, 20k, 24k, 26k, 33k, 40k (350 to 1,270 CFM)
- Replaces Singer/McQuay VF/VP/VG chassis



LM Chassis Series

- 14 EER and 4.7 COP
- Unit sizes: 08k, 10k, 12k, 15k, 18k (245 to 550 CFM)
- Replaces Singer/McQuay LM Low Sill chassis



LS Chassis Series

- 13 EER and 4.5 COP
- Unit sizes: 08k, 10k, 12k, 15k, 18k (250 to 600 CFM)
- Replaces Singer/McQuay LM-B series chassis



WCH / WMH Chassis Series

- 13 EER and 4.3 COP
- Unit sizes: 08k, 10k, 12k (250 to 400 CFM)
- Replaces Snyder General WCH chassis



WMR Chassis Series

- 13 EER and 4.4 COP
- Unit sizes: 08k, 10k, 12k, 15k, 18k (250 to 600 CFM)
- Replaces Singer/McQuay WM-B chassis



CC Chassis Series

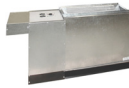
- 13 EER and 4.4 COP
- Unit sizes: 10k, 12k, 15k, 20k, 26k, 33k, 40k, 52k (350 to 1,800 CFM)
- Replaces Singer/Climate Control CC series

American Air Filter / Enercon Replacements



ACW Chassis Series

- 14 EER and 4.6 COP
- Unit sizes: 08k, 10k, 12k, 15k, 19k (250 to 650 CFM)
- Replaces American Air Filter SSACW chassis



BCW Chassis Series

- 12 EER and 4.2 COP
- Unit sizes: 08k, 10k, 12k (250 to 420 CFM)
- Replaces American Air Filter SSBCW chassis



HW Chassis Series

- 14 EER and 4.5 COP
- Unit sizes: 09k, 12k, 20k, 26k, 33k, 40k, 51k, 55k (300 to 1,650 CFM)
- Replaces American Air Filter/Enercon HW straight blow through design unit

WATER SOURCE PRODUCTS



Omega CHS Chassis Series

- 15 EER and 4.5 COP
- Unit sizes: 10k, 12k, 20k, 24k (350 to 800 CFM)
- Replaces Omega HRP chassis



Zehnder/Rittling RTL Chassis Series

- 15 EER and 4.4 COP
- Unit sizes: 10k, 12k, 15k, 18k, 24k, 30k, 36k (300 to 1,200 CFM)
- Replaces Zehnder/Rittling VHCH chassis



Slant-Fin WC Chassis Series

- 13 EER
- Unit sizes: 06k, 09k, 12k, 16k (200 to 510 CFM)
- Replaces Slant-Fin WC chassis



Whalen VI / WA Chassis Series

- 14 EER and 4.4 COP
- Unit sizes: 06k, 10k, 12k, 20k, 24k, 30k, 36k (200 to 1,200 CFM)
- Replaces The Whalen Company VI chassis



Johnson Controls VSC / VSP Chassis Series

- 13 EER and 4.4 COP
- Unit sizes: 9k, 12k, 15k, 18k, 24k, 30k, 36k (300 to 1200 CFM)
- Replaces Johnson Controls VSCS chassis

AIR SOURCE PRODUCTS

ClimateMaster Replacements



702 Chassis Series

- 10 EER
- Unit sizes: 09k, 12k, 15k, 18k (300 to 600 CFM)
- Replaces ClimateMaster / Friedrich 702, IslandAire-CM and RetroAire RC20 chassis



VT Chassis Series

- 8 EER Cooling, 9 EER Heat Pump Cooling, 3.2 COP
- Unit sizes: 12k, 18k (400 to 600 CFM)
- Replaces ACP/ClimateMaster VT A, B, C series chassis



EA Chassis Series

- 9 EER
- Unit sizes: 09k, 12k, 15k (300 to 500 CFM)
- Replaces McQuay EA, ES and RS, IslandAire ED and RetroAire RC-35



EK Chassis Series

- 9 EER
- Unit sizes: 09k, 12k, 14k (300 to 465 CFM)
- Replaces Remington / Singer / McQuay K, IslandAire KF and RetroAire RC 60 chassis



Carrier 5QT Chassis Series

- 8 EER and 2.9 COP
- Unit sizes: 18k, 24k (600 to 800 CFM)
- Replaces Carrier 50QT chassis



First Company PIC Chassis Series

- 11 EER and 3.4 COP
- Unit sizes: 09k, 12k, 15k, 18k, 24k (300 to 800 CFM)
- For renovation; Replaces RetroAire VPAC and First Company DPU chassis



Magic Chef PWC Chassis Series

- 8 EER and 2.7 COP
- Unit sizes: 18k, 24k (600 to 800 CFM)
- Replaces Magic Chef PWC chassis



Adirondack Aire PIN Chassis Series

- 10.4 EER and 3.0 COP
- Unit sizes: 09k, 12k, 15k (300 to 500 CFM)
- Existing PIN replacement only



American Air Filter 16 Chassis Series

- 10 EER
- Unit sizes: 09k, 12k, 15k (300 to 500 CFM)
- Replaces American Air Filter Enersaver Type 16 and Type 16 Hydronic, IslandAire 16 and RetroAire RC-10 chassis



American Standard / Singer 45 Chassis Series

- 10 EER
- Unit sizes: 09k, 12k, 15k, 18k (300 to 600 CFM)
- Replaces American Standard Type 45, Carteret Type 45, Remington / Singer Type 45, IslandAire 45 and RetroAire RC-10 chassis



Ice-Cap / IslandAire RK Chassis Series

- 9 EER
- Unit sizes: 09k, 12k, 15k, 18k (300 to 600 CFM)
- Replaces Ice-Cap RSK, IslandAire RK and RetroAire RC-22



Embassy / Weather Twin RM Chassis Series

- 9 EER
- Unit sizes: 09k, 12k, 15k, 18k (300 to 600 CFM)
- Replaces Embassy, Weather Twin RM, TPI Ra-Matic, Zone Aire S/SC/RM, IslandAire RM and RetroAire RC 20



INNOVATIVE HEATING AND COOLING SOLUTIONS

Cold Point equipment has been specified in hundreds of projects in these and other applications:
Direct Replacement | New Construction | Renovation | Commercial & Residential Solutions

Cold Point values reliability as much as you

Your Cold Point sales representative knows their reputation is on the line with every sale. Therefore, they are as personally invested in your comfort as you are, and take great pride in creating your perfect indoor environment.

Rest comfortably, knowing Cold Point stands behind our products

The Cold Point Corporation backs our products with a standard warranty that includes labor for the entire first year of ownership. Registered Limited Warranty terms include: 12 month limited warranty on components, 60 month limited warranty on all unit compressors from the date of original installation OR 15 months limited warranty on components, 63 month limited warranty on all unit compressors from the date of original sale, whichever comes first. For all coverage options and complete coverage terms, check with your local Cold Point representative for full details.

Industry-leading expertise

Cold Point Corporation is the industry-leading supplier of aftermarket comfort solutions for commercial and residential applications. We have over 25 years of experience developing OEM-style replacement products to keep you happy and comfortable. Whether it is a water source heat pump application or an air source PTAC system, Cold Point has the knowledge and products to restore your system to its original operating condition.

Reliable comfort products backed by the industry experts in OEM-style replacement units

To learn more about how the Cold Point Corporation can help you save time and money on your next project, contact your local Cold Point representative. Call **315-339-2331** to speak with one of our specialists, or e-mail your request to info@coldpointcorp.com.

Your Cold Point Representative:



510 Henry Street • Rome, New York 13440
Phone (315) 339-2331 • Fax (315) 339-2358
www.ColdPointCorp.com

©2024 Cold Point Corp. All rights reserved.



rev. 11-24 CPL001